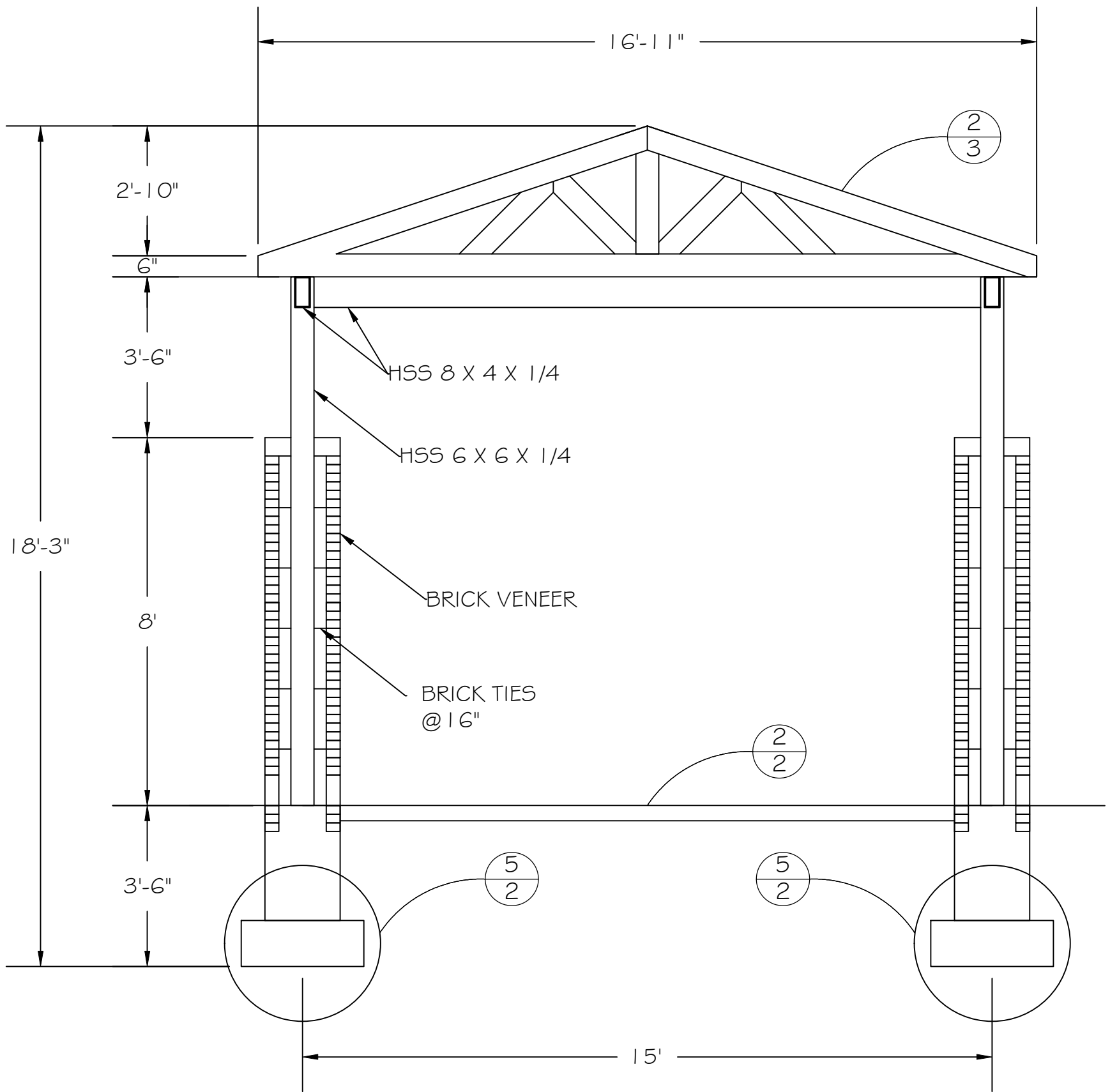


FRONT CANOPY SECTION

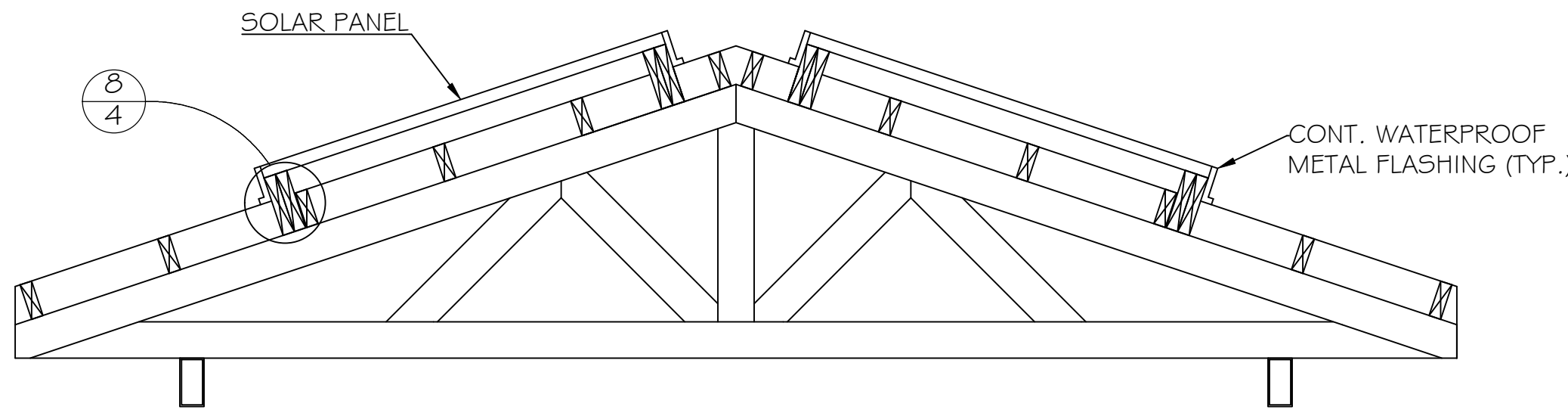
SCALE: 3/8" = 1'



REAR CANOPY SECTION

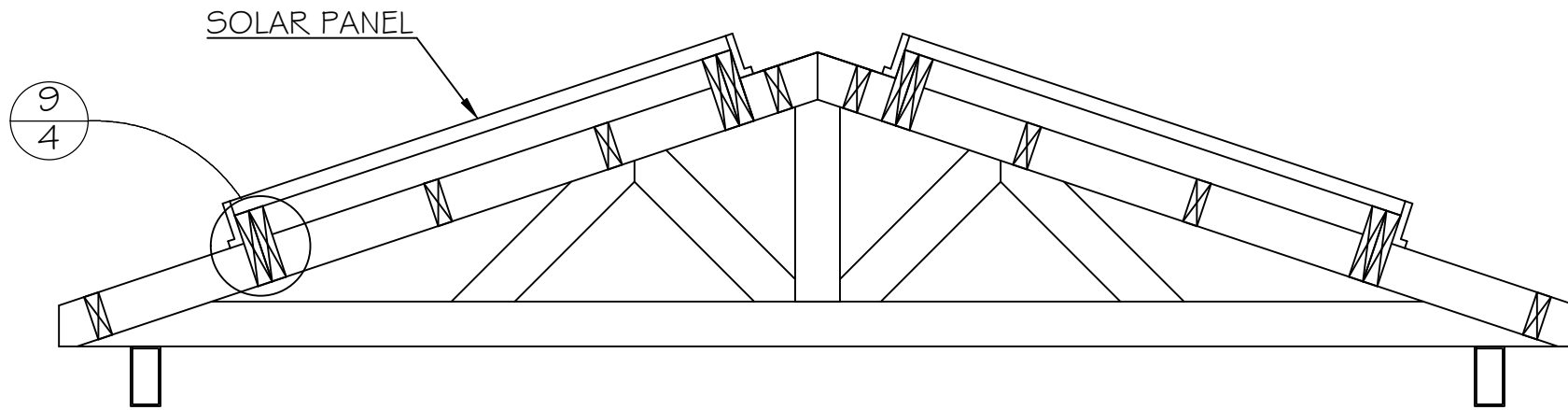
SCALE: 3/8" = 1'

NOTE: ALL STEEL MEMBER CONNECTIONS SHALL BE FULL 1/4" FILLET WELDED



3 FRONT CANOPY SOLAR PANEL DETAIL

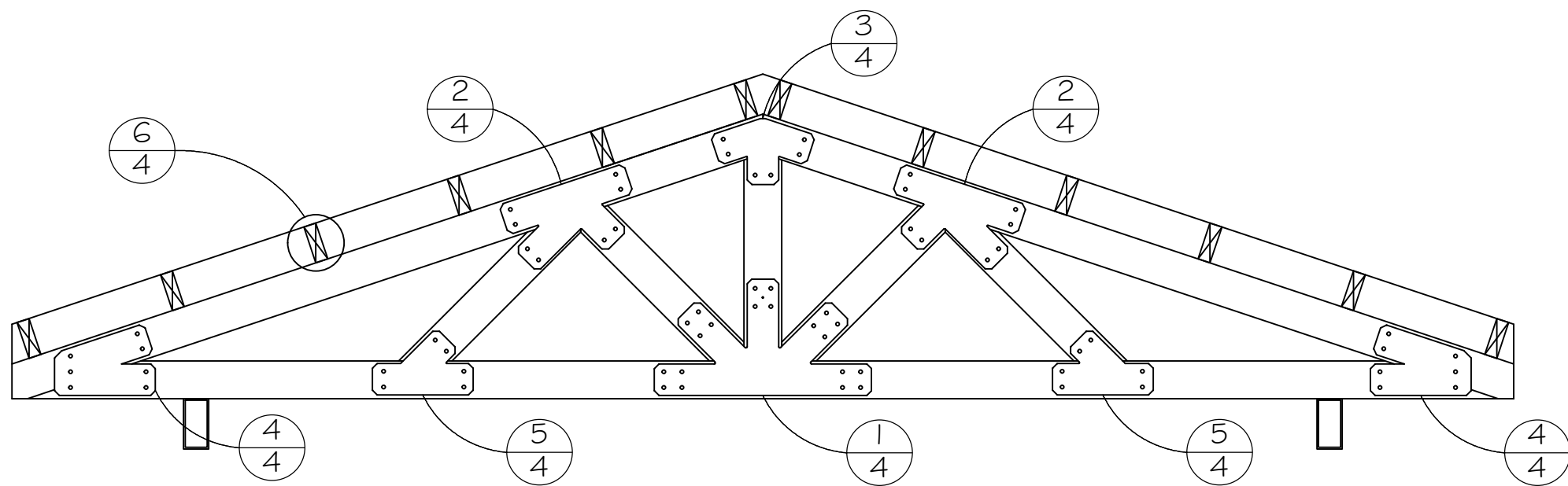
SCALE: 3/8" = 1'



4 REAR CANOPY SOLAR PANEL DETAIL

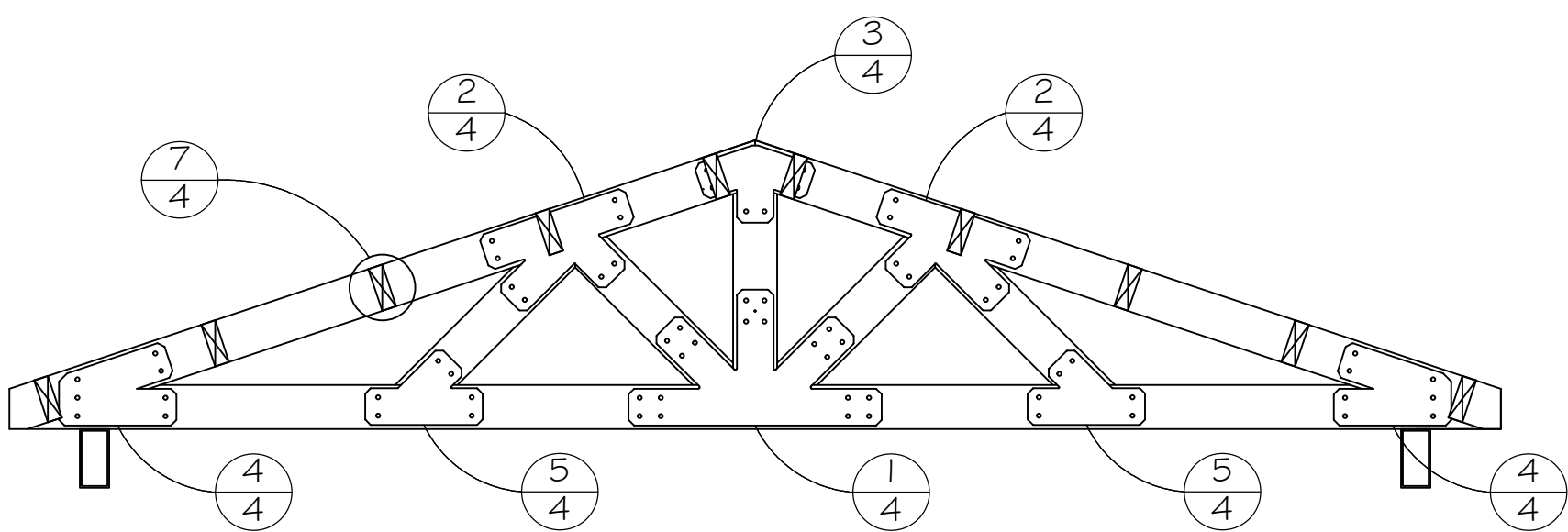
SCALE: 3/8" = 1'

NOTE: ALL TRUSS MEMBERS TO BE 4" X 6" TREATED SOUTHERN PINE NO. 2 OR BETTER AT 39" O.C.



1 FRONT CANOPY ROOF DETAIL

SCALE: 3/8" = 1'

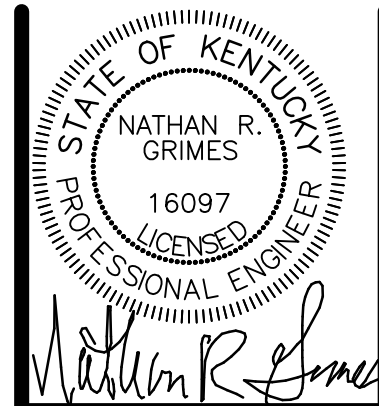


2 REAR CANOPY ROOF DETAIL

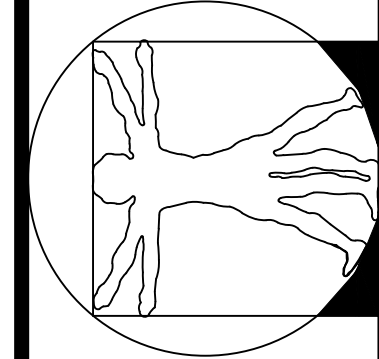
SCALE: 3/8" = 1'

NOTICE:

The Architect/Engineer does not define the scope of individual trades, subcontractors, material suppliers, or vendors. Any sheet numbering system used which identifies disciplines is solely for the Architect/Engineer's convenience, and is not intended to define a subcontractor's scope of work. Information regarding individual trades, subcontractors, material suppliers, and vendors may be detailed, described and indicated at different locations throughout these documents. No consideration will be given to requests for change orders for failure to obtain and review the complete set of drawings and specifications when preparing bids, prices and quotations.



RENAISSANCE DESIGN BUILD, INC.  
1012 South Fourth Street  
Louisville, Kentucky 40203  
Tel: 502-424-8373 Fax: 502-587-0931  
www.renaissancebuild.com



CANOPY DETAILS  
THOMAS JEFFERSON UNITARIAN CHURCH  
4936 BROWNSBORO RD  
LOUISVILLE, KY 40222

DATE: NOVEMBER 19, 2020  
DRAWN BY: P. GEORGE  
CHECKED BY: N. GRIMES  
APPROVED BY: N. GRIMES

REVISIONS:  
.....

SCALE: N/A  
JOB NO.: 2020-485

SHEET NUMBER:

3