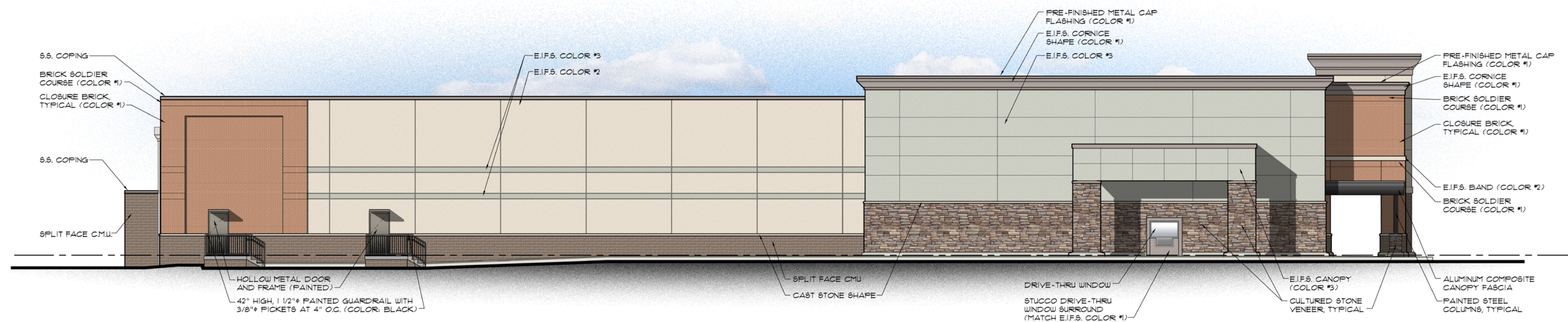
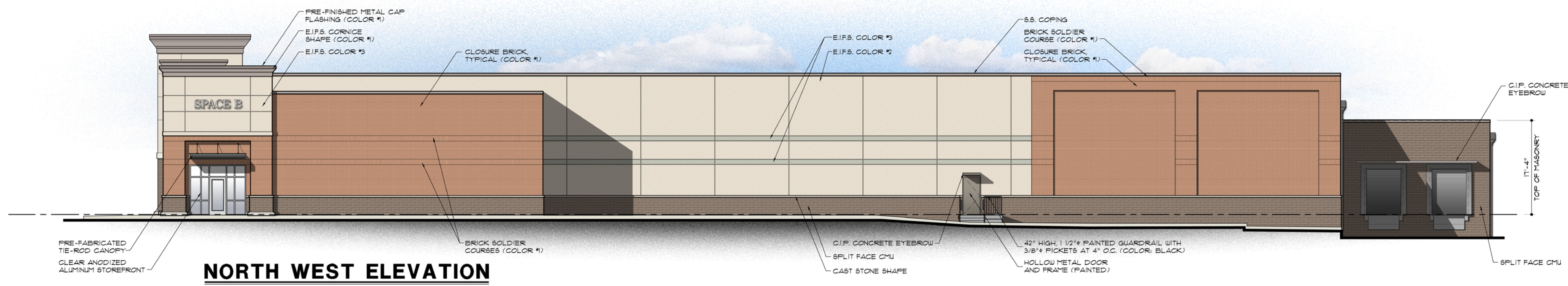


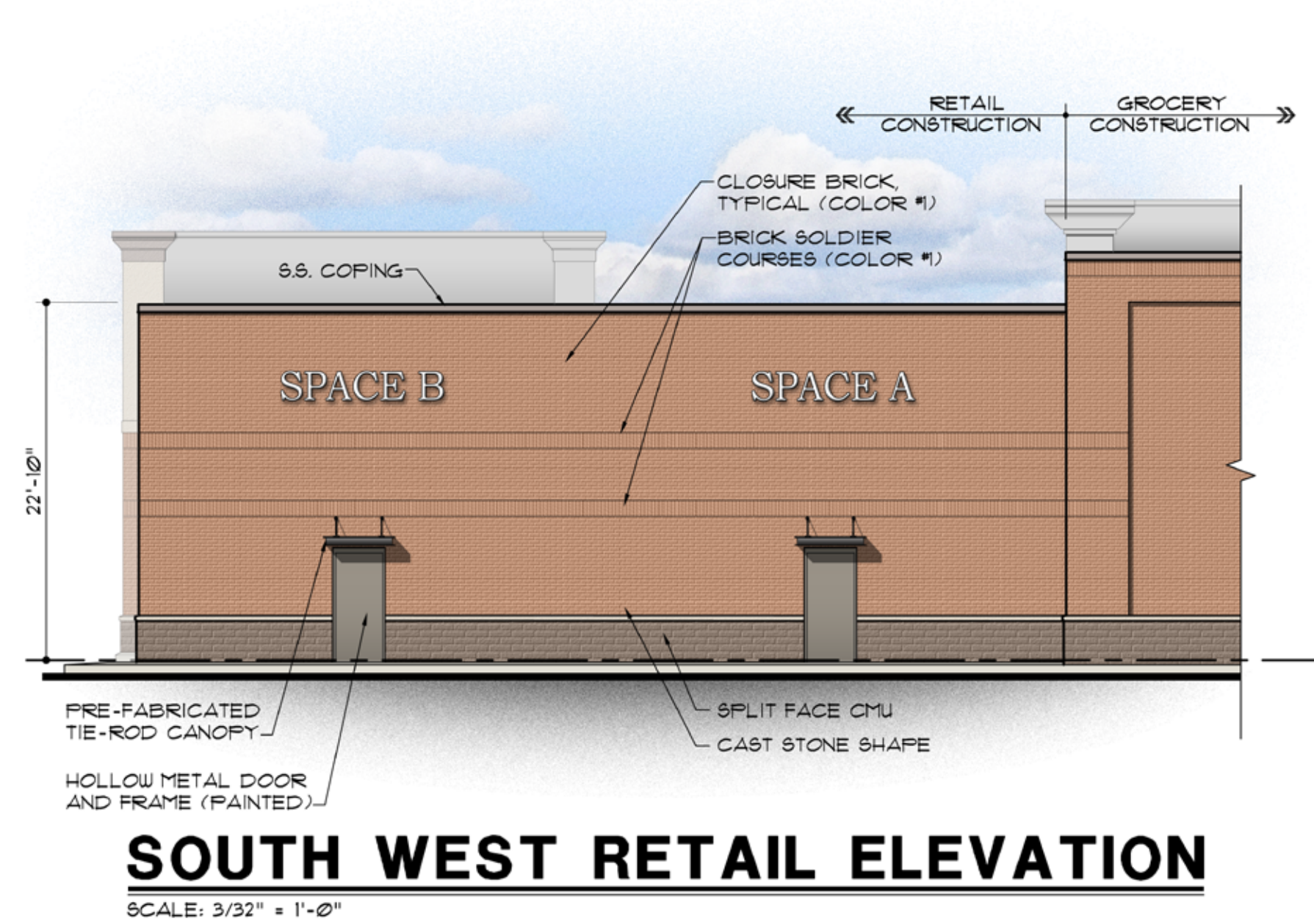
**NORTH EAST ELEVATION**  
SCALE: 3/32" = 1'-0"



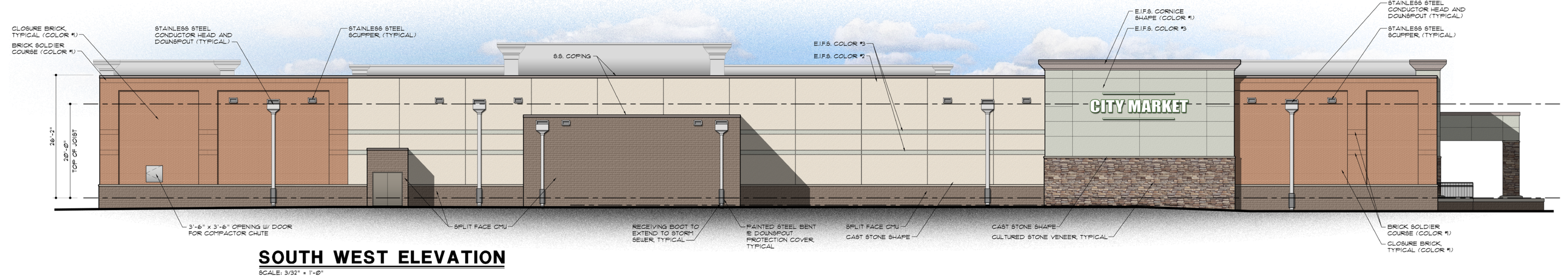
**SOUTH EAST ELEVATION**  
SCALE: 3/32" = 1'-0"



**NORTH WEST ELEVATION**  
SCALE: 3/32" = 1'-0"



**SOUTH WEST RETAIL ELEVATION**  
SCALE: 3/32" = 1'-0"



**SOUTH WEST ELEVATION**  
SCALE: 3/32" = 1'-0"

EXTERIOR FINISH LEGEND		
EIFS & STUCCO		
EIFS COLOR #1	CORNICE	MASTER WALL #102 "LONDON WHITE" OR EQUAL FINISH - FINE SAND
EIFS COLOR #2	FIELD	MASTER WALL #101 "CHINA WHITE" OR EQUAL FINISH - FINE SAND
EIFS COLOR #3	FIELD	MASTER WALL #664 "LUNAR" OR EQUAL FINISH - FINE SAND
BRICK		
BRICK COLOR #1	FIELD/ACCENT	TAYLOR CLAY PRODUCTS, INC. - #13 "PINK" WIRECUT, CLOSURE MORTAR - MONOKITE - #380 "RIVERSTONE"
CMU		
CMU COLOR #1	WATER TABLE	YORK BUILDING PRODUCTS SPLIT FACE CMU COLOR: COCOA
CAST STONE		
PRE-CAST STONE COLOR #1	BILL SHAPE, HEADERS	COLOR: "FAUN" MORTAR - MONOKITE - #380 "RIVERSTONE"
STONE		
CULTURED STONE VENEER	BASE/MASONRY COLUMNS	ELDORADO VERONA HILLSIDE OR SIMILAR FINAL SELECTION TBD
ALUM. STOREFRONT		
PRE-FIN. ALUM.	STOREFRONT	CLEAR ANODIZED
ALUMINUM COMPOSITE MATERIALS		
ALUMINUM COMPOSITE COLOR #1	CANOPY FASCIA, TIE ROD CANOPY	CHARCOAL BY REYNOLDS OR EQUAL
PARAPET CAP FLASHING		
PRE-FIN. METAL COPING COLOR #1	CORNICE COPING	COLOR: SIERRA TAN
S.S. COPING	PARAPET COPING	--
EXTERIOR STEEL COLUMNS		
PAINTED STEEL COLUMNS	CANOPY COLUMNS	SHERWIN WILLIAMS ACRYLON 100 POLYURETHANE, (1) COATS OVER PRO-GRY, UNIVERSAL PRIMER, COLOR TO MATCH ACH #1 "CHARCOAL", G.C. TO PROVIDE SAMPLES TO ARCHITECT FOR FINAL SELECTION.