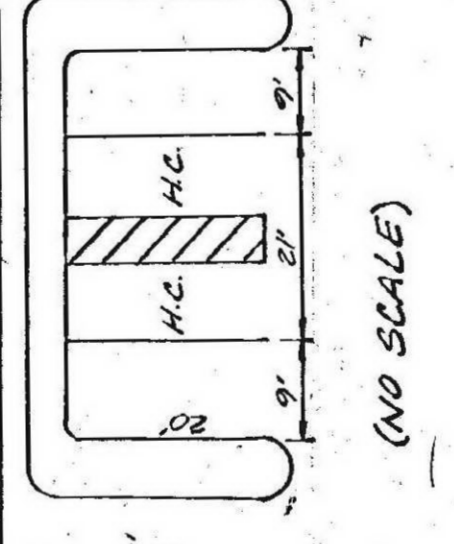


**DATA:**

EXISTING ZONE: C-AM  
 AREA: 42.127 ACRES  
 100 YEAR FLOOD ELEVATION: 451.0 FEET  
 FINISH FLOOR ELEVATIONS TO BE: 452.6 FEET  
 V.I.U.A. AREA: 166,780 SQ. FT.  
 5% LANDSCAPE PROVIDED: 6,100 SQ. FT.  
 TOTAL LANDSCAPE: 67,100 SQ. FT.  
 PROPOSED USE: WAREHOUSE  
 OFFICE/WAREHOUSE  
 BUILDINGS 1-5: 2-STORY OFFICE/WAREHOUSE  
 BUILDINGS 6-11: 1-STORY WAREHOUSE

NOTE #1: RIVER ROAD IS NOT RECONSTRUCTED AND WIDENED WITHIN FIVE YEARS OF APPROVAL OF THIS REVISED PLAN. THE DEVELOPER SHALL CONSTRUCT A LEFT TURN LANE AT THE WEST ENTRANCE AND AT THE EAST ENTRANCE OF THE PROJECT. THESE LANS SHALL BE CONSTRUCTED TO STANDARDS TO BE APPROVED BY THE CITY OF LOUISVILLE DEPARTMENT OF PUBLIC WORKS.  
 #2: SUBJECT TO BOARD OF HEALTH APPROVAL.

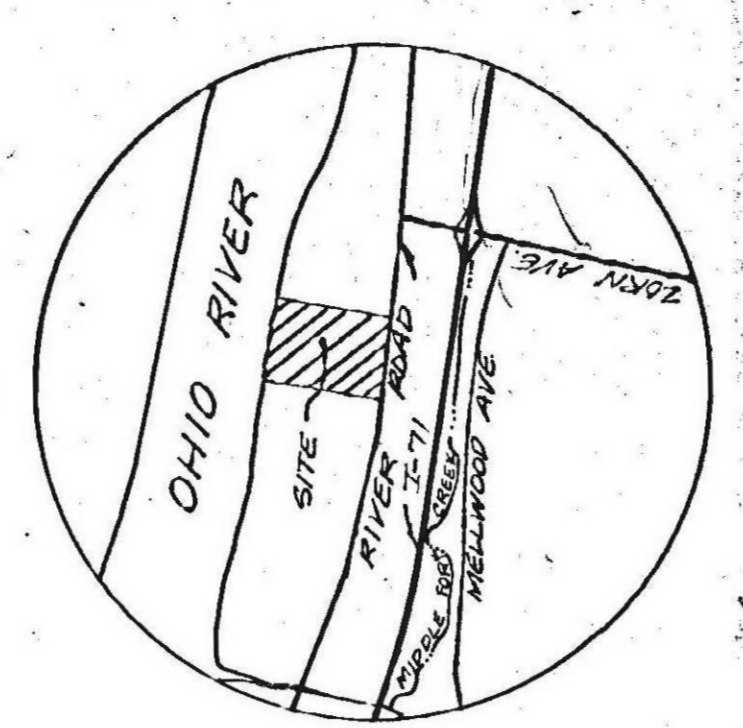
**TYPICAL PARKING SPACES**



**DATA**

**BUILDING SQUARE FOOTAGE & PARKING**

1	107' x 300'	32,100 SQ. FT.	40
2	120' x 340'	40,800 SQ. FT.	17
3	80' x 300'	24,000 SQ. FT.	12
4	80' x 300'	24,000 SQ. FT.	12
5	80' x 300'	24,000 SQ. FT.	12
6	120' x 340'	40,800 SQ. FT.	17
7	300' x 340'	102,000 SQ. FT.	64
8	120' x 340'	40,800 SQ. FT.	17
9	120' x 340'	40,800 SQ. FT.	17
10	120' x 340'	40,800 SQ. FT.	17
11	120' x 340'	40,800 SQ. FT.	17
TOTAL		444,800 SQ. FT.	150 (INCL. 11 H.C.)



LOCATION MAP  
 NO SCALE

CITY OF LOUISVILLE  
 DEPARTMENT OF ASSOCIATIONS & LICENSES  
 PRELIMINARY DEVELOPMENT SITE PLAN APPROVAL  
 9-25-97

SALE # 000  
 DATE 9-25-97  
 100% COMPLETE  
 REV. 3-16-97

**SABAK, WILSON & LINGO, INC.**  
 ENGINEERS, LANDSCAPE ARCHITECTS & PLANNERS  
 313 WEST MARKET STREET, LOUISVILLE, KENTUCKY 40202  
 (502) 344-4321



"REVISED"  
 RIVER GREEN BUSINESS PARK  
 DISTRICT DEVELOPMENT PARTNERSHIP  
 OWNER: LINSON, KY GENERAL PARTNERSHIP  
 2811 UPPER RIVER ROAD  
 LOUISVILLE, KENTUCKY 40206

RECEIVED  
 8/25/97  
 PLANNING DEPARTMENT  
 DEVELOPMENT SERVICES  
 9-110-84-120