

**Christian Brothers Automotive – Meijer Louisville Outlot Legal Description**

A certain tract of land located in Jefferson County, Kentucky at 4500 South Hurstbourne Parkway and more particularly described as follows:

Beginning at a point in the west right of way line of South Hurstbourne Parkway, said point being the northeast property corner of Meijer Realty Company as shown in Deed Book 7113, Page 260 as recorded in the Jefferson County Clerk's Office; Thence leaving the west right of way line and property boundary and through the lands of Meijer Realty Company, South 48°31'55" West, a distance of 146.61 feet to the TRUE POINT OF BEGINNING; Beginning at a point in the property of Meijer Realty Company, thence with the proposed boundary for eleven (11) calls:

South 02°53'55" West a distance of 134.83 feet to a point;

Thence South 06°27'11" West a distance of 7.57 feet to a point;

Thence South 12°08'08" West a distance of 35.26 feet to a point;

Thence South 19°31'55" West a distance of 9.59 feet to a point;

Thence South 21°09'15" West a distance of 3.87 feet to a point;

Thence North 87°23'06" West a distance of 94.21 feet to a point;

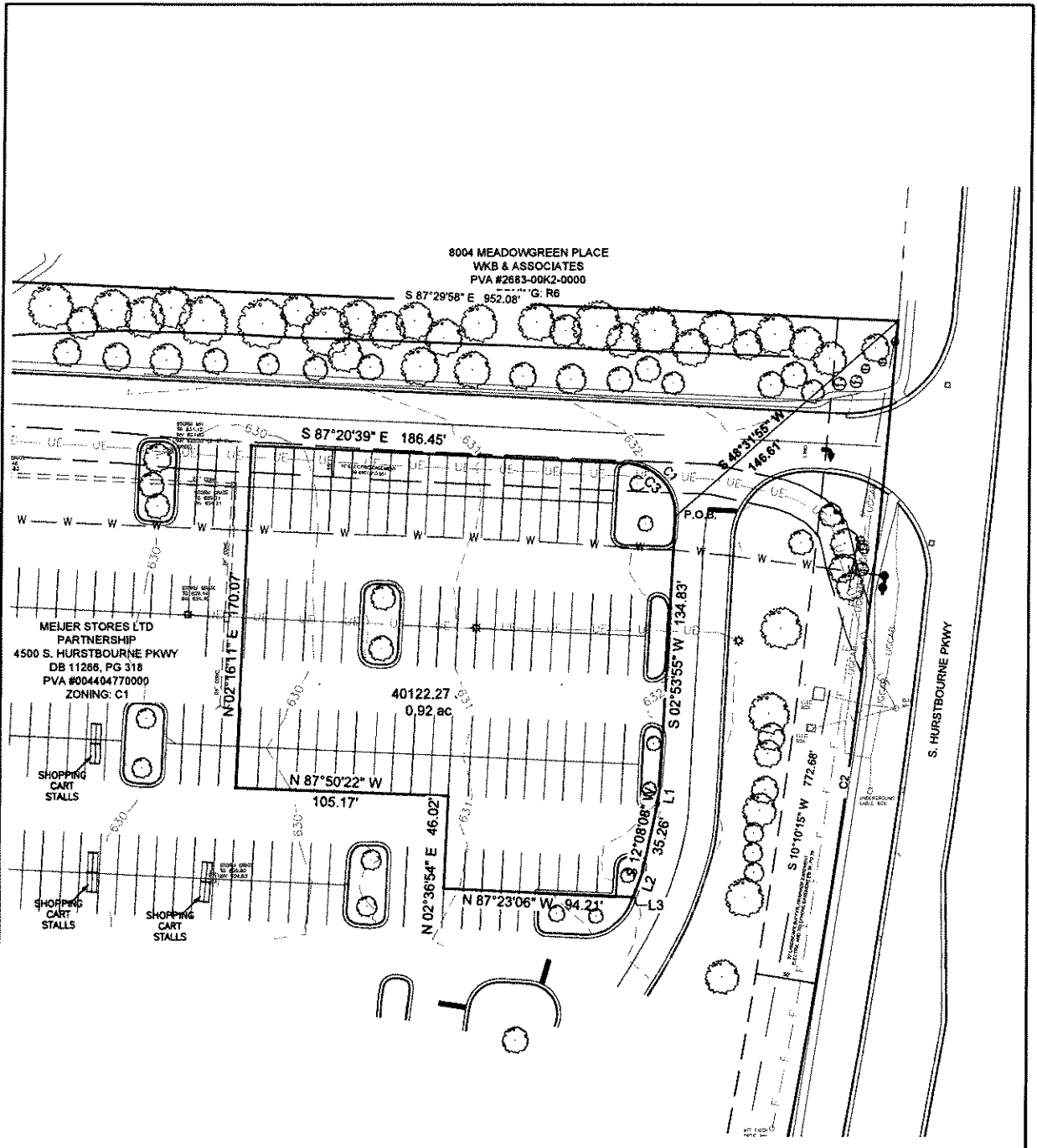
Thence North 02°36'54" East a distance of 46.02 feet to a point;

Thence North 87°50'22" West a distance of 105.17 feet to a point;

Thence North 02°16'11" East a distance of 170.07 feet to a point;

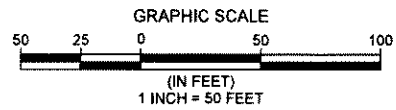
Thence South 87°20'39" East a distance of 186.45 feet to the point;

Thence along a curve to the right (clockwise) with an Arc Length of 39.38 feet, a Radius of 25.00 feet, and a Chord bearing of South 42°13'22" East – 35.43 feet to beginning and containing 40,122.27 s.f (0.92 acres).



CURVE	RADIUS	ARC LENGTH	CHORD LENGTH	CHORD BEARING	DELTA ANGLE
C1	126.00'	86.38'	135.45'	S 19°42'13.22\" W	180°14.94'

Line #	Length	Direction
L1	7.57'	S 08°27'11\" W
L2	0.59'	S 18°31'55\" W
L3	3.87'	S 21°09'15\" W



**THOROUGHBRED**  
 DESIGN | ENGINEER | CONSTRUCTOR  
 P.O. BOX 481 LEXINGTON, KY 40588  
 (859) 785-0383  
 CIVIL DESIGN, LAND SURVEYING,  
 GEOTECHNICAL ENGINEERING, DRILLING SERVICES,  
 IBC SPECIAL INSPECTIONS, MATERIAL TESTING,  
 CM-CI-CONSTRUCTION SERVICES

**BOUNDARY EXHIBIT**  
 MEIJER STORES LTD PARTNERSHIP  
 CHRISTIAN BROTHER AUTOMOTIVE  
 4500 S HURSTBOURNE PARKWAY  
 LOUISVILLE, JEFFERSON COUNTY, KENTUCKY 40291

23-3086 01-25

DATE	07/26/2023
SCALE	1"=50'
DRAWN BY	1310
CHECKED BY	1200
PROJECT NO.	210164
SHEET	