


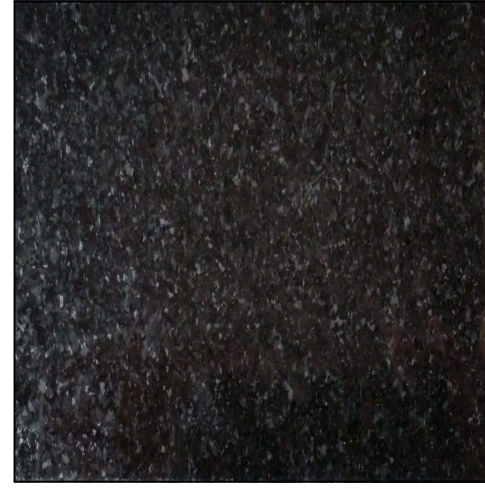


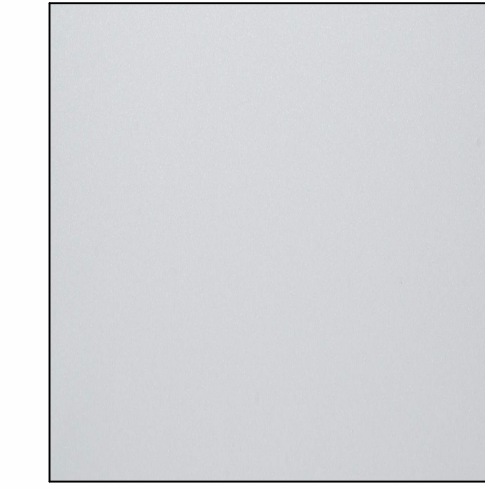
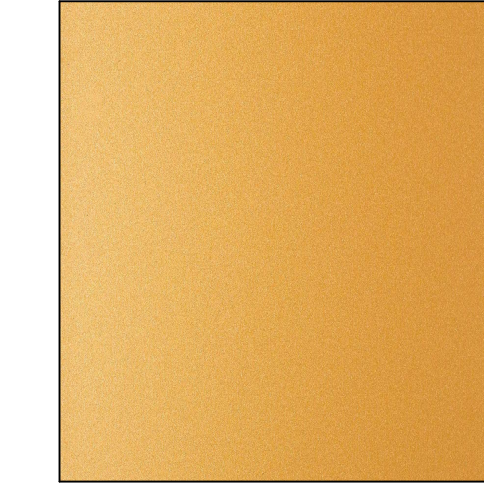




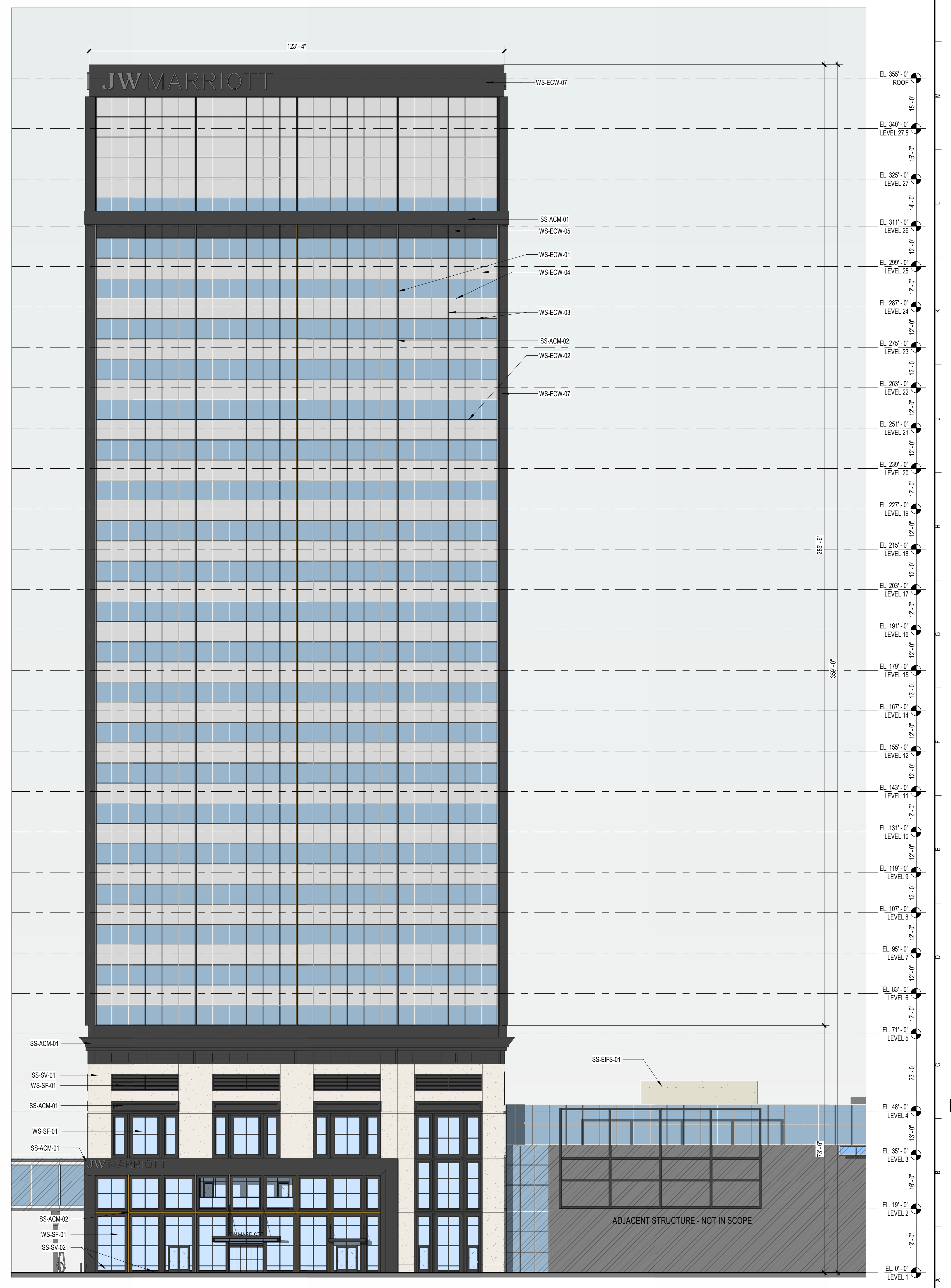
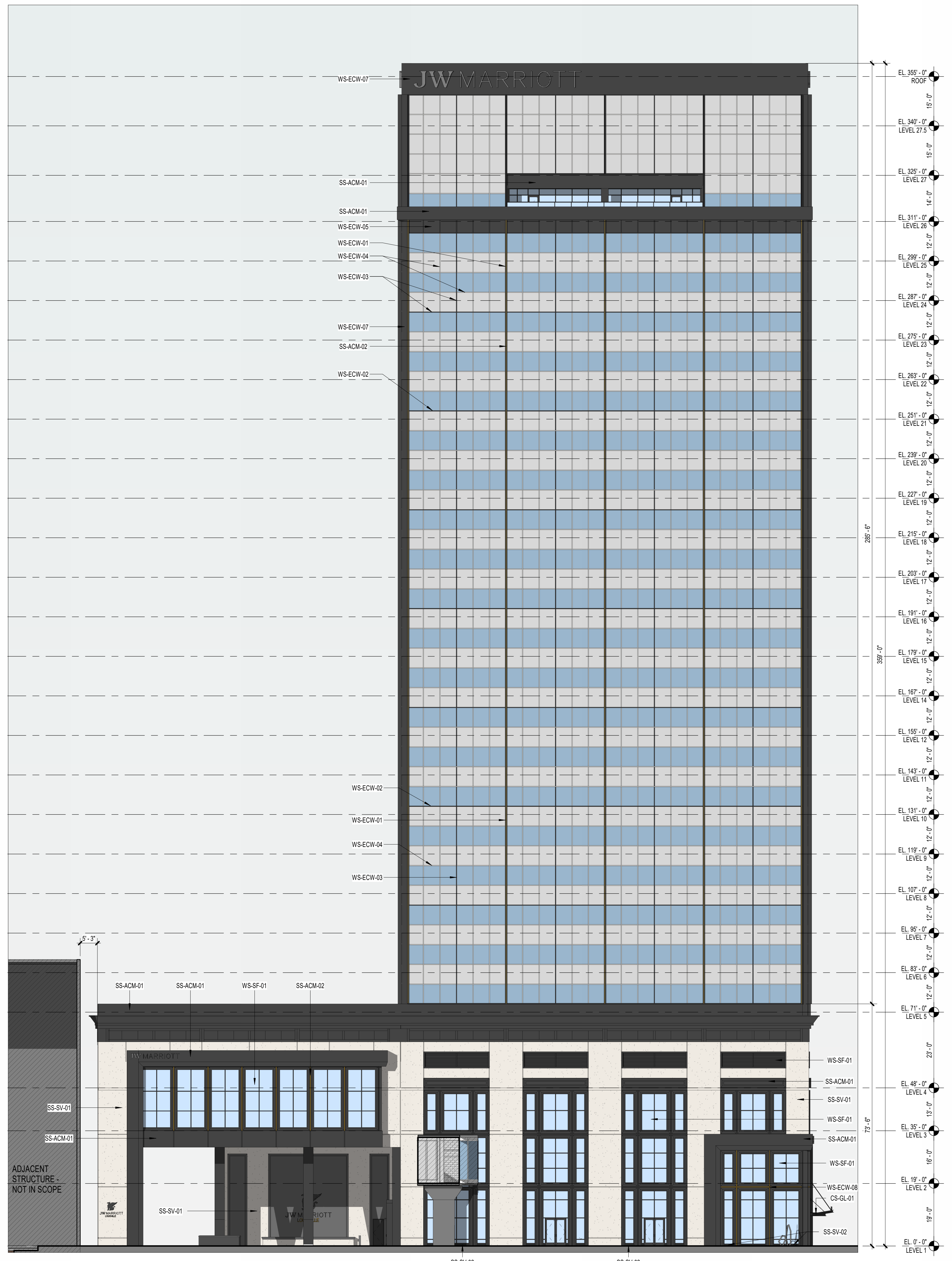


**SCOPE DOCUMENTS**

The Contract Documents issued for Design Development are intended to be at that level of development and as such, may be neither complete nor coordinated. The Contractor is responsible for complete and coordinated pricing and execution of the Work, and shall include items necessary for the proper execution and completion of the Work, as shown, specified, reasonably inferred or required for a complete Project. For Work of delegated designs, systems, assemblies, components and materials shall comply with national, state and local code requirements. The Contractor shall inform the Owner and Architect, in timely fashion, of any discovered omissions, inconsistencies or errors in the Contract Documents.

ISSUANCES		
No.	Drawing Issue Description	Date
	PLANNING SUBMISSION	04/27/2026

							
SS-SV-01 (ALTERNATE: PRECAST CONCRETE)	SS-SV-02	SS-EIFS-01	SS-ACM-01 WS-CW-01 WS-SF-01 WS-ECW-01	WS-ECW-02 WS-ECW-03 WS-ECW-05 WS-ECW-07	WS-ECW-04	SS-ACM-02	WS-SF-01 WS-ECW



PROJECT NUMBER: 20250030 PROJECT NAME: JW MARRIOTT LOUISVILLE  
 SHEET NUMBER: A4.41 - NORTH & WEST ELEVATIONS - MATERIAL PALETTE  
 Autodesk Docs://20250030 - JW Marriott Louisville/20250030\_v25\_Louisville-JW Marriott\_ARCH.rvt  
 4/24/2026 3:55:56 PM

**JW MARRIOTT LOUISVILLE**

401 S 4TH ST  
 LOUISVILLE, KY 40202

Louisville Landmark Hotel, LLC

**NORTH & WEST ELEVATIONS - MATERIAL PALETTE**

MIKE LINKER Principal-in-Charge	20250030 Project No.
BRANDON LENK Project Manager	04/27/26 Date
JASON ALBERS Project Architect	
Staff Architect	

**A4.41**



SCOPE DOCUMENTS

The Contract Documents issued for Design Development are intended to be at that level of development and as such, may be neither complete nor coordinated. The Contractor is responsible for complete and coordinated pricing and execution of the Work, and shall include items necessary for the proper execution and completion of the Work, as shown, specified, reasonably inferred or required for a complete Project. For Work of delegated designs, systems, assemblies, components and materials shall comply with national, state and local code requirements. The Contractor shall inform the Owner and Architect, in timely fashion, of any discovered omissions, inconsistencies or errors in the Contract Documents.

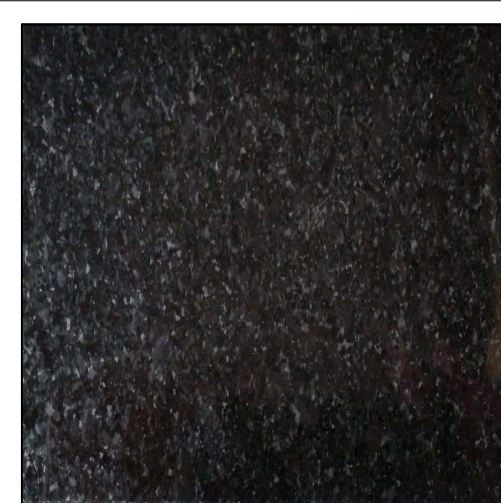
ISSUANCES

No.	Drawing Issue Description	Date
PLANNING SUBMISSION		04/27/2026



INDIANA LIMESTONE - "RUSTIC GRAY"

SS-SV-01  
(ALTERNATE, PRECAST CONCRETE)



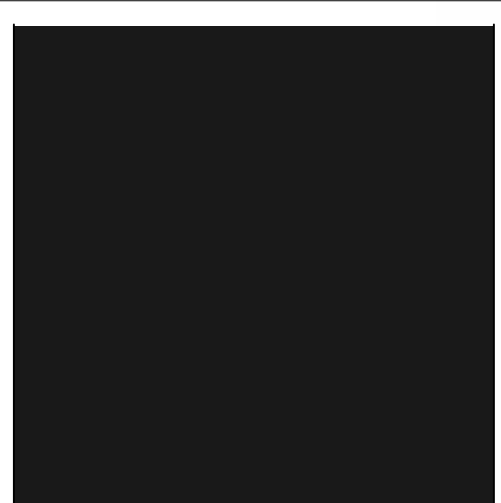
GRANITE - "ABSOLUTE BLACK GRANITE"

SS-SV-02



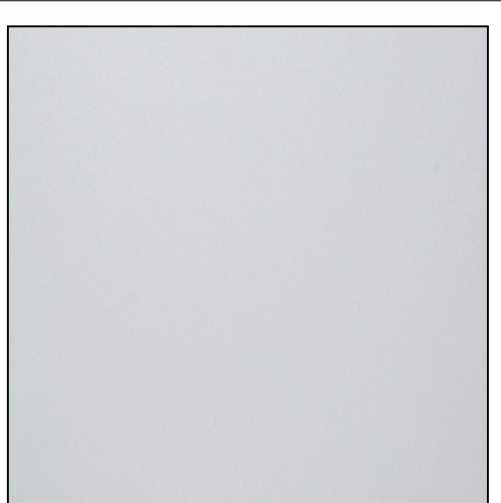
EIFS - OFF-WHITE

SS-EIFS-01



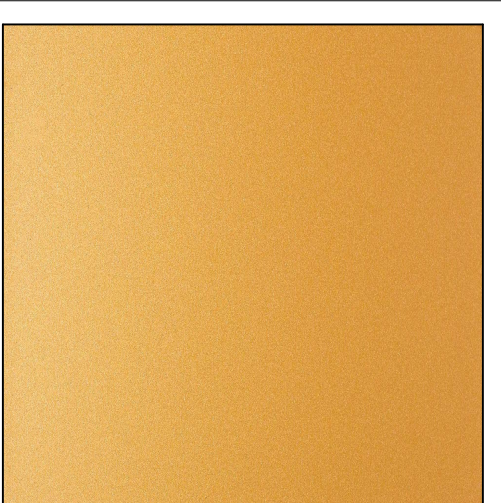
METAL - "TRI-CORN BLACK"

SS-ACM-01  
WS-CW-01  
WS-SF-01  
WS-ECW-01  
WS-ECW-02  
WS-ECW-03  
WS-ECW-04  
WS-ECW-05  
WS-ECW-06  
WS-ECW-07



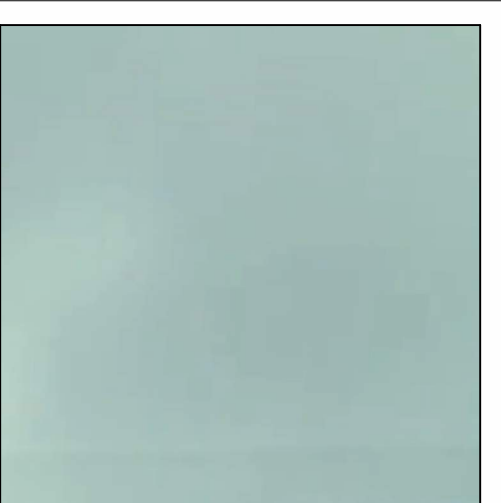
METAL - "MARKET PEARL WHITE MICA"

WS-ECW-04



METAL - "COLORADO GOLD METALLIC"

SS-ACM-02



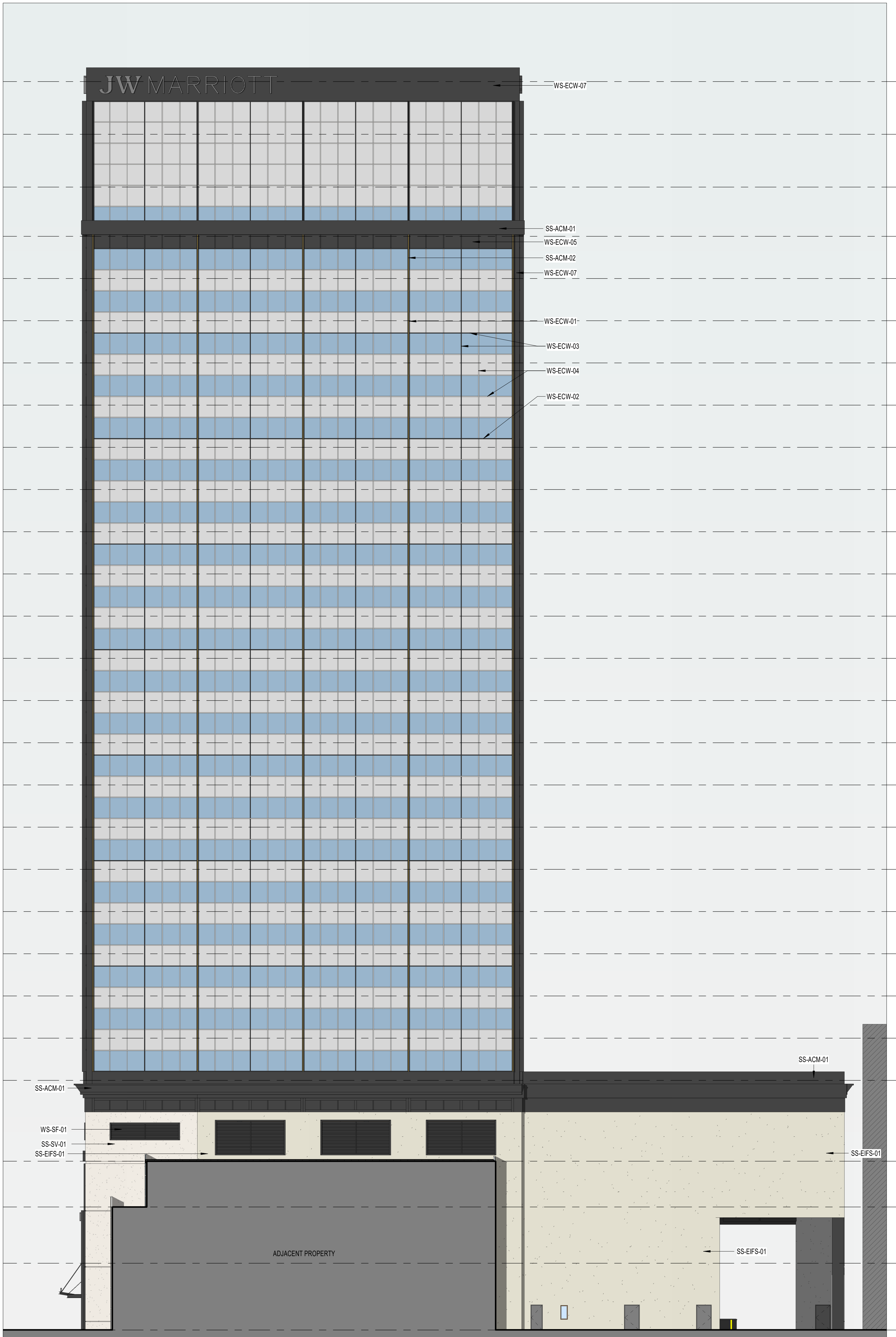
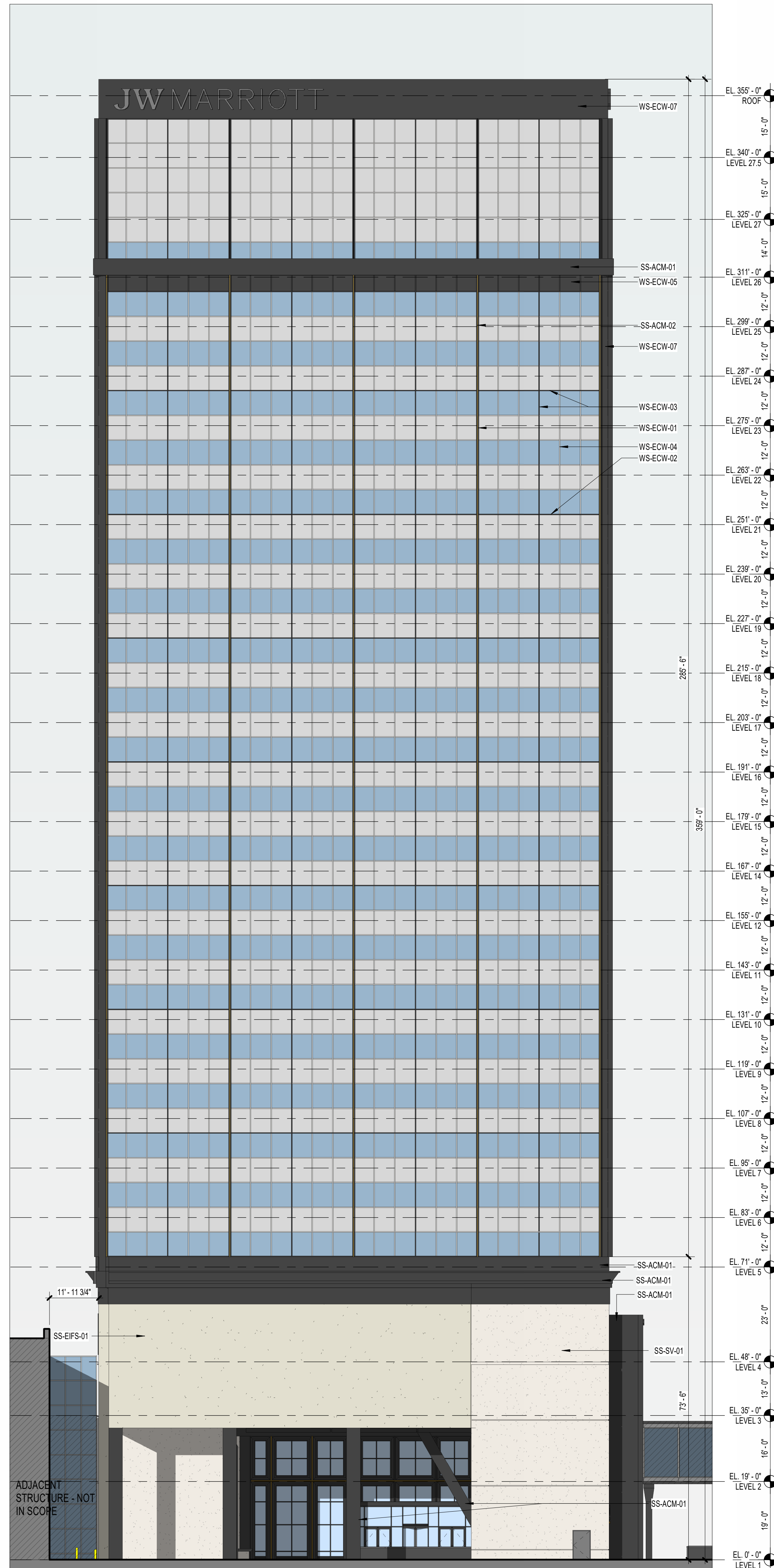
GLAZING - GUARDIAN SUNGUARD SNX 62/27

WS-SF-01



GLAZING - EXISTING CURTAIN WALL

WS-ECW



3 EAST ELEVATION - PORTE COCHERE - MATERIALS  
SCALE: 1/16" = 1'-0"

2 EAST ELEVATION - MATERIALS  
SCALE: 1/16" = 1'-0"

1 SOUTH ELEVATION - MATERIALS  
SCALE: 1/16" = 1'-0"

JW MARRIOTT LOUISVILLE

401 S 4TH ST  
LOUISVILLE, KY 40202

Louisville Landmark Hotel, LLC

SOUTH & EAST ELEVATIONS - MATERIAL PALETTE

MIKE LINKER Principal-in-Charge	20250030 Project No.
BRANDON LENK Project Manager	04/27/26 Date
JASON ALBERS Project Architect	
Staff Architect	

A4.42



# COOPER CARRY

THE CENTER FOR CONNECTIVE ARCHITECTURE

625 North Washington Street  
Suite 200  
Alexandria, VA 22314  
(703) 519-6152  
coopercarry.com

©2020 COOPER CARRY

### SCOPE DOCUMENTS

The Contract Documents issued for Design Development are intended to be at that level of development and as such, may be neither complete nor coordinated. The Contractor is responsible for complete and coordinated pricing and execution of the Work, and shall include items necessary for the proper execution and completion of the Work, as shown, specified, reasonably inferred or required for a complete Project. For Work of delegated designs, systems, assemblies, components and materials shall comply with national, state and local code requirements. The Contractor shall inform the Owner and Architect, in timely fashion, of any discovered omissions, inconsistencies or errors in the Contract Documents.

### ISSUANCES

No.	Drawing Issue Description	Date
	PLANNING SUBMISSION	04/27/2020



## JW MARRIOTT LOUISVILLE

401 S 4TH ST  
LOUISVILLE, KY 40202

Louisville Landmark Hotel, LLC

### 3D RENDERING - NE AERIAL



# COOPER CARRY

MIKE LINKER	20250030
Principal-in-Charge	Project No.
BRANDON LENK	04/27/26
Project Manager	Date
JASON ALBERS	
Project Architect	
Staff Architect	

# A4.43

NOT ISSUED FOR CONSTRUCTION

PROJECT NUMBER: 20250030 PROJECT NAME: JW MARRIOTT LOUISVILLE  
SHEET NUMBER: A4.43 3D RENDERING - NE AERIAL  
Autodesk Docs/20250030 - JW Marriott Louisville/20250030\_V25\_Louisville-JW Marriott\_ARCH.rvt  
4/24/2026 3:56:35 PM



**COOPER CARRY**  
 THE CENTER FOR CONNECTIVE ARCHITECTURE  
 625 North Washington Street  
 Suite 200  
 Alexandria, VA 22314  
 (703) 519-6152  
 coopercarry.com

©2026 COOPER CARRY

**SCOPE DOCUMENTS**

The Contract Documents issued for Design Development are intended to be at that level of development and as such, may be neither complete nor coordinated. The Contractor is responsible for complete and coordinated pricing and execution of the Work, and shall include items necessary for the proper execution and completion of the Work, as shown, specified, reasonably inferred or required for a complete Project. For Work of delegated designs, systems, assemblies, components and materials shall comply with national, state and local code requirements. The Contractor shall inform the Owner and Architect, in timely fashion, of any discovered omissions, inconsistencies or errors in the Contract Documents.

**ISSUANCES**

No.	Drawing Issue Description	Date
	PLANNING SUBMISSION	04/27/2026



PROJECT NUMBER: 20250030 PROJECT NAME: JW MARRIOTT LOUISVILLE  
 SHEET NUMBER: A4.44 3D RENDERING - NW AERIAL  
 Autodesk Docs://20250030 - JW Marriott Louisville/20250030\_V25\_Louisville-JW Marriott\_ARCH.rvt  
 4/24/2026 3:56:36 PM

**JW MARRIOTT LOUISVILLE**

401 S 4TH ST  
 LOUISVILLE, KY 40202  
 Louisville Landmark Hotel, LLC



**COOPER CARRY**

**3D RENDERING - NW AERIAL**

MIKE LINKER	20250030
Principal-in-Charge	Project No.
BRANDON LENK	04/27/26
Project Manager	Date
JASON ALBERS	
Project Architect	
Staff Architect	

**A4.44**

NOT ISSUED FOR CONSTRUCTION



©2020 COOPER CARRY

**SCOPE DOCUMENTS**

The Contract Documents issued for Design Development are intended to be at that level of development and as such, may be neither complete nor coordinated. The Contractor is responsible for complete and coordinated pricing and execution of the Work, and shall include items necessary for the proper execution and completion of the Work, as shown, specified, reasonably inferred or required for a complete Project. For Work of delegated designs, systems, assemblies, components and materials shall comply with national, state and local code requirements. The Contractor shall inform the Owner and Architect, in timely fashion, of any discovered omissions, inconsistencies or errors in the Contract Documents.

**ISSUANCES**

No.	Drawing Issue Description	Date
	PLANNING SUBMISSION	04/27/2026



**JW MARRIOTT LOUISVILLE**

401 S 4TH ST  
 LOUISVILLE, KY 40202

Louisville Landmark Hotel, LLC



**3D RENDERING - NW STREET VIEW**

**COOPER CARRY**

MIKE LINKER Principal-in-Charge	20250030 Project No.
BRANDON LENK Project Manager	04/27/26 Date
JASON ALBERS Project Architect	
Staff Architect	<b>A4.45</b>



# COOPER CARRY

THE CENTER FOR CONNECTIVE ARCHITECTURE

625 North Washington Street  
Suite 200  
Alexandria, VA 22314  
(703) 519-6152  
coopercarry.com

©2025 COOPER CARRY

### SCOPE DOCUMENTS

The Contract Documents issued for Design Development are intended to be at that level of development and as such, may be neither complete nor coordinated. The Contractor is responsible for complete and coordinated pricing and execution of the Work, and shall include items necessary for the proper execution and completion of the Work, as shown, specified, reasonably inferred or required for a complete Project. For Work of delegated designs, systems, assemblies, components and materials shall comply with national, state and local code requirements. The Contractor shall inform the Owner and Architect, in timely fashion, of any discovered omissions, inconsistencies or errors in the Contract Documents.

### ISSUANCES

No.	Drawing Issue Description	Date
	PLANNING SUBMISSION	04/27/2025



PROJECT NUMBER: 20250030 PROJECT NAME: JW MARRIOTT LOUISVILLE  
SHEET NUMBER: A4.46 - 3D RENDERING - ENTRY  
Autodesk Docs/20250030 - JW Marriott Louisville/20250030\_v25\_Louisville-JW Marriott\_ARCH.rvt  
4/24/2025 3:56:39 PM

## JW MARRIOTT LOUISVILLE

401 S 4TH ST  
LOUISVILLE, KY 40202

Louisville Landmark Hotel, LLC

### 3D RENDERING - ENTRY



MIKE LINKER	20250030
Principal-in-Charge	Project No.
BRANDON LENK	04/27/26
Project Manager	Date
JASON ALBERS	
Project Architect	
Staff Architect	

# A4.46

NOT ISSUED FOR CONSTRUCTION



©2026 COOPER CARRY

**SCOPE DOCUMENTS**

The Contract Documents issued for Design Development are intended to be at that level of development and as such, may be neither complete nor coordinated. The Contractor is responsible for complete and coordinated pricing and execution of the Work, and shall include items necessary for the proper execution and completion of the Work, as shown, specified, reasonably inferred or required for a complete Project. For Work of delegated designs, systems, assemblies, components and materials shall comply with national, state and local code requirements. The Contractor shall inform the Owner and Architect, in timely fashion, of any discovered omissions, inconsistencies or errors in the Contract Documents.

**ISSUANCES**

No.	Drawing Issue Description	Date
	PLANNING SUBMISSION	04/27/2026



**JW MARRIOTT LOUISVILLE**

401 S 4TH ST  
 LOUISVILLE, KY 40202

Louisville Landmark Hotel, LLC

**3D RENDERING - PORTE  
 COCHERE**



**COOPER CARRY**

MIKE LINKER Principal-in-Charge	20250030 Project No.
BRANDON LENK Project Manager	04/27/26 Date
JASON ALBERS Project Architect	
Staff Architect	<b>A4.47</b>

PROJECT NUMBER: 20250030 PROJECT NAME: JW MARRIOTT LOUISVILLE  
 SHEET NUMBER: A4.47 - 3D RENDERING - PORTE COCHERE  
 Autodesk Docs://20250030 - JW Marriott Louisville/20250030\_v25\_Louisville-JW Marriott\_ARCH.rvt  
 4/24/2026 3:56:40 PM

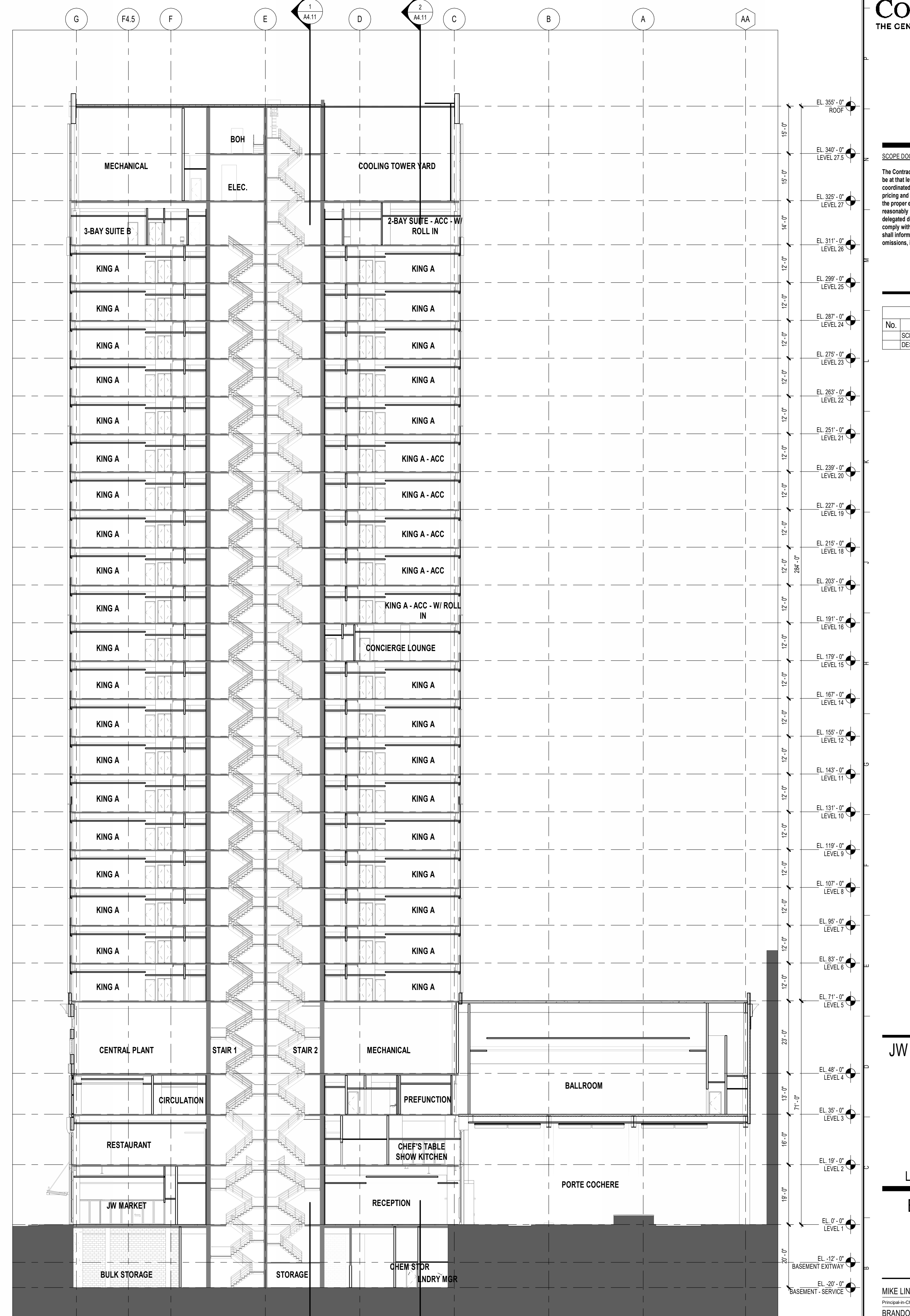
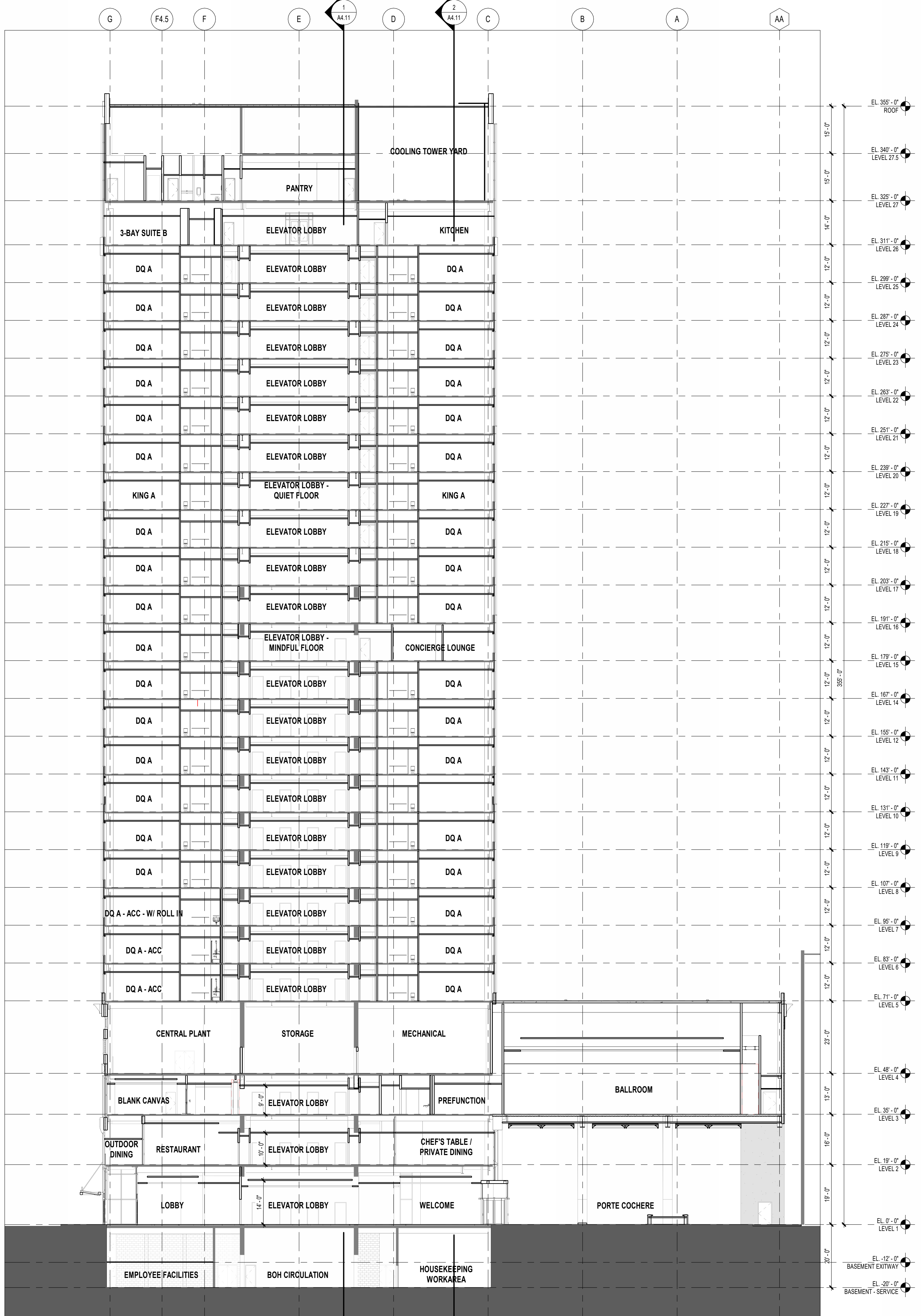




**SCOPE DOCUMENTS**  
The Contract Documents issued for Design Development are intended to be at that level of development and as such, may be neither complete nor coordinated. The Contractor is responsible for complete and coordinated pricing and execution of the Work, and shall include items necessary for the proper execution and completion of the Work, as shown, specified, reasonably inferred or required for a complete Project. For Work of delegated designs, systems, assemblies, components and materials shall comply with national, state and local code requirements. The Contractor shall inform the Owner and Architect, in timely fashion, of any discovered omissions, inconsistencies or errors in the Contract Documents.

**ISSUANCES**

No.	Drawing Issue Description	Date
	SCHEMATIC DESIGN	05/09/2025
	DESIGN DEVELOPMENT	05/01/2026



**2** SECTION THROUGH ELEVATOR LOBBY LOOKING NORTH  
A1.01/A4.10 SCALE: 1/16" = 1'-0"

**1** SECTION THROUGH STAIRS LOOKING NORTH  
A1.01/A4.10 SCALE: 1/16" = 1'-0"



PROJECT NUMBER: 20250030 PROJECT NAME: JW MARRIOTT LOUISVILLE  
SHEET NUMBER: A4.10 - BUILDING SECTIONS  
Autodesk Docs/20250030 - JW Marriott Louisville/20250030\_v25\_Louisville-JW Marriott\_ARCH.rvt  
5/1/2026 3:23:12 PM

**JW MARRIOTT LOUISVILLE**

401 S 4TH ST  
LOUISVILLE, KY 40202

Louisville Landmark Hotel, LLC

**BUILDING SECTIONS**

Principal in Charge	MIKE LINKER	Project No.	20250030
Project Manager	BRANDON LENK	Date	05/01/2026
Project Architect	JASON ALBERS		
Staff Architect			

**A4.10**

**SEAT COUNTS:**

**LOBBY LOUNGE #106**  
 LOUNGE CHAIRS 1 X 14 = 14  
 SOFA GROUPING 4 X 01 = 4  
**SUB - TOTAL 18**

**LOBBY BAR #107**  
 BAR COUNTER 1 X 08 = 8  
 BAR COUNTER (ADA) 1 X 02 = 2  
 2-TOPS (30" DIA.) 2 X 02 = 4  
 4-TOPS (30" DIA.) 4 X 02 = 8  
**SUB - TOTAL 22**

**LOBBY (MEDIA) LOUNGE #109**  
 4-TOPS (30" DIA.) 4 X 04 = 16  
 2-TOPS (24" DIA.) 2 X 01 = 2  
 SOFA GROUPING 4 X 02 = 8  
**SUB - TOTAL 26**

**LOBBY #111**  
 SOFA GROUPING 6 X 03 = 18  
 SOFA GROUPING 3 X 01 = 3  
**SUB - TOTAL 21**

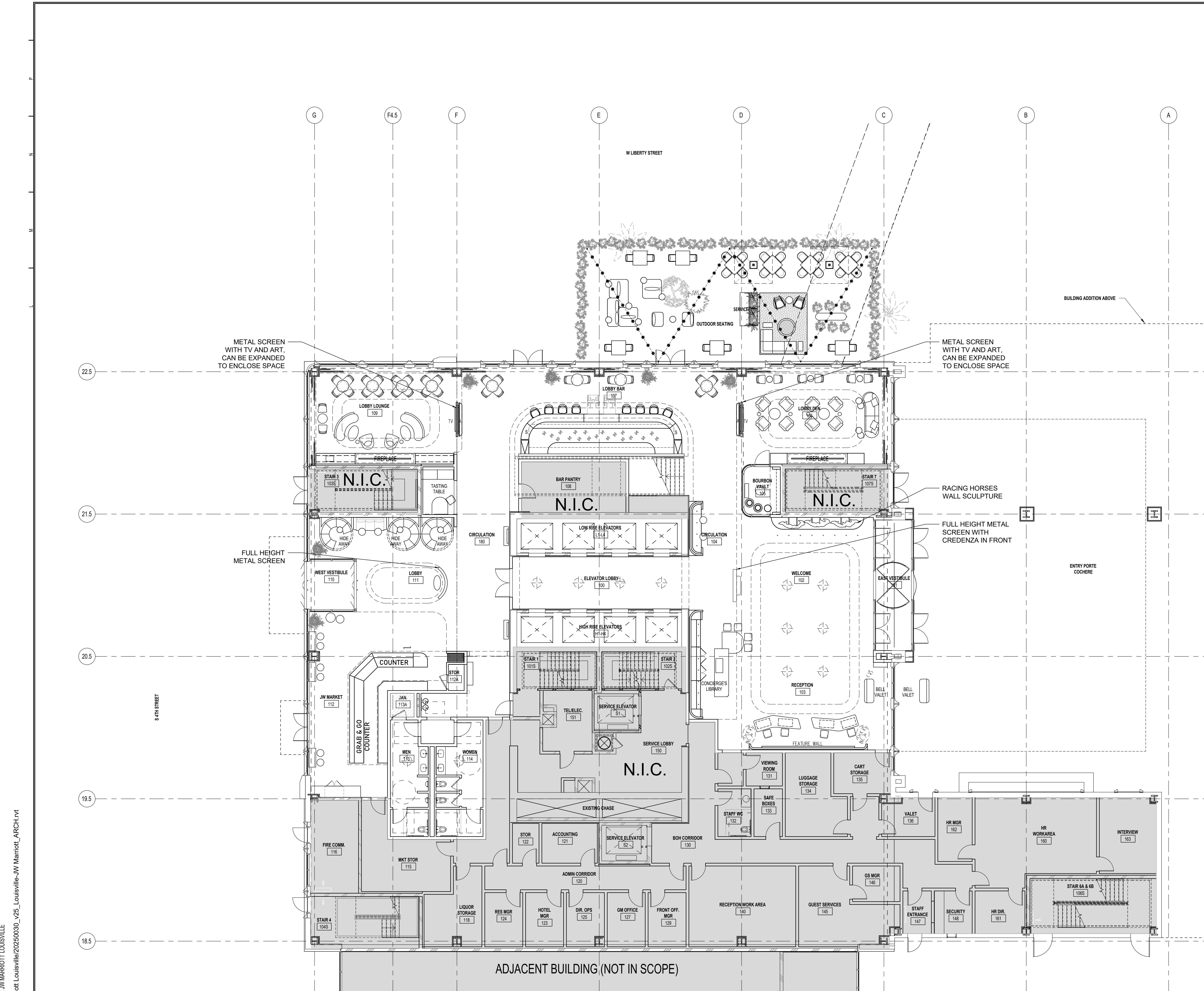
**OUTDOOR SEATING**  
 4-TOPS (36" X 36") 4 X 04 = 16  
 2-TOPS (36" X 36") 2 X 05 = 10  
 SOFA GROUPING 18 X 01 = 18  
 SOFA GROUPING 6 X 01 = 6  
**SUB - TOTAL 50**

**LOBBY LOUNGE #106 18**  
**LOBBY BAR #107 22**  
**LOBBY (MEDIA) LOUNGE #109 26**  
**LOBBY #111 21**  
**OUTDOOR SEATING 50**  
**TOTAL 137**

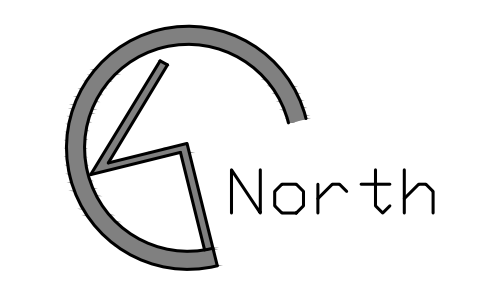
**SCOPE DOCUMENTS**  
 The Contract Documents issued for [Conceptual Design, Schematic Design, Design Development, Partial Construction Documents or Other Issuance up to Issued for Construction] are intended to be at that level of development and as such, may be neither complete nor coordinated. The [Construction Manager, Contractor, Design/Builder] is responsible for complete and coordinated pricing [and execution] of the Work, and shall include items necessary for the proper execution and completion of the Work, as shown, specified, reasonably inferred or required for a complete Project. For Work of delegated designs, systems, assemblies, components and materials shall comply with national, state and local code requirements. The [Construction Manager, Contractor, Design/Builder] shall inform the Owner and Architect, in timely fashion, of any discovered omissions, inconsistencies or errors in the Contract Documents.

**ISSUANCES**

No.	Drawing Issue Description	Date
	SCHEMATIC DESIGN	05/09/2025
	DESIGN DEVELOPMENT	05/01/2026



**LEGEND:**  
 [Shaded Box] NOT IN CONTRACT



**JW MARRIOTT LOUISVILLE**

401 S 4TH ST  
 LOUISVILLE, KY 40202  
 Louisville Landmark Hotel, LLC

**FURNITURE & FIXTURE PLAN  
 LEVEL 1**

KAY LANG	20250030
Principal-in-Charge	Project No.
VLADEMIR MARTINEZ	05/01/2026
Project Manager	Date
Project Architect	
Staff Architect	

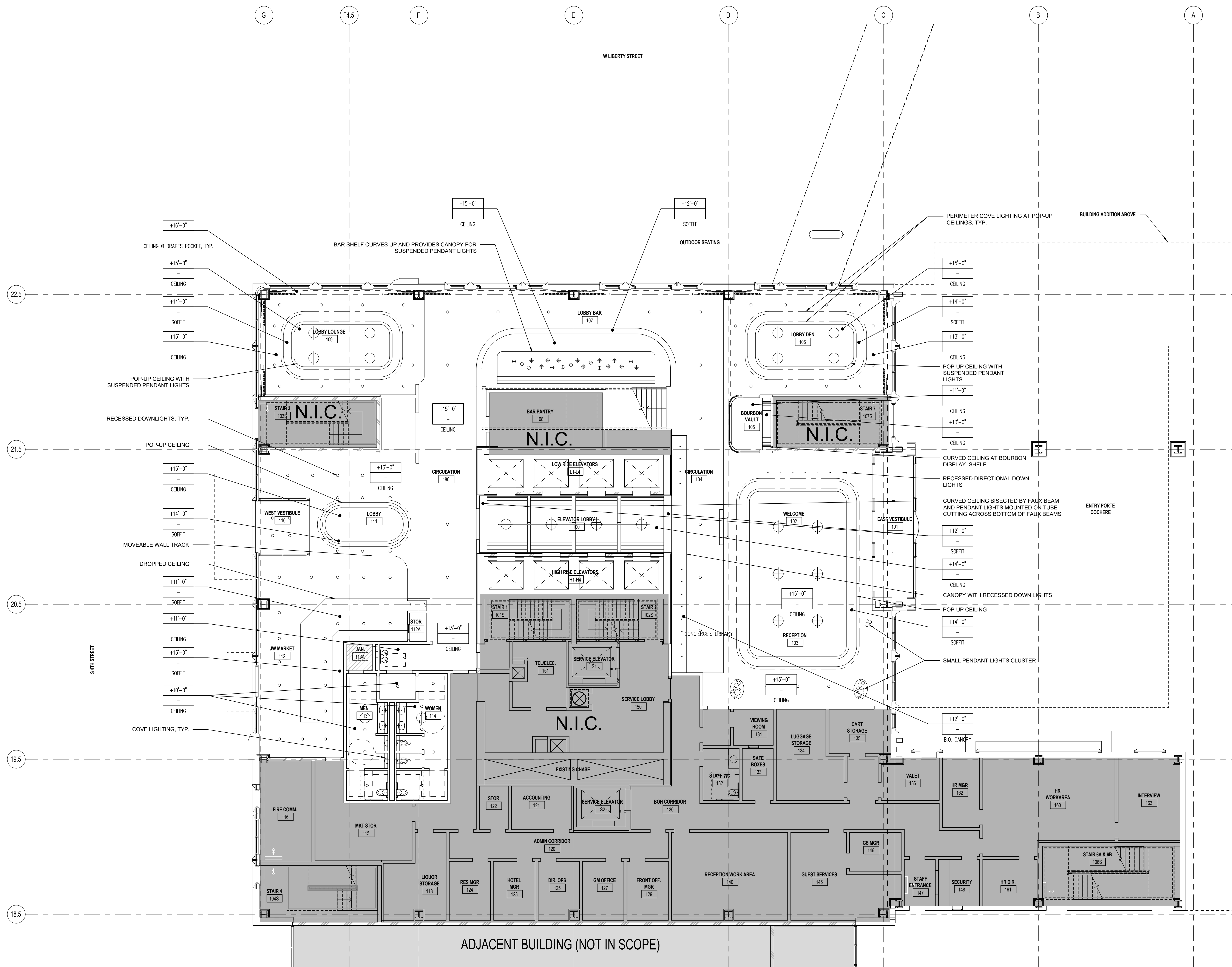
**ID 1.12**

PROJECT NUMBER: 20250030 PROJECT NAME: JW MARRIOTT LOUISVILLE  
 SHEET NUMBER: AX-XX - SHEET TITLE  
 Autodesk Docs/20250030 - JW Marriott Louisville/20250030\_v25\_Louisville-JW Marriott\_ARCH.rvt  
 3/13/2026 4:37:27 PM

**SCOPE DOCUMENTS**

The Contract Documents issued for [Conceptual Design, Schematic Design, Design Development, Partial Construction Documents or Other Issuance up to Issued for Construction] are intended to be at that level of development and as such, may be neither complete nor coordinated. The [Construction Manager, Contractor, Design/Builder] is responsible for complete and coordinated pricing [and execution] of the Work, and shall include items necessary for the proper execution and completion of the Work, as shown, specified, reasonably inferred or required for a complete Project. For Work of delegated designs, systems, assemblies, components and materials shall comply with national, state and local code requirements. The [Construction Manager, Contractor, Design/Builder] shall inform the Owner and Architect, in timely fashion, of any discovered omissions, inconsistencies or errors in the Contract Documents.

ISSUANCES		
No.	Drawing Issue Description	Date
	SCHEMATIC DESIGN	05/09/2025
	DESIGN DEVELOPMENT	05/01/2026



**LEGEND:**  
 [Grey Box] NOT IN CONTRACT



REFLECTED CEILING PLAN - LEVEL 1  
 SCALE: 1/8" = 1'-0"

**JW MARRIOTT LOUISVILLE**

401 S 4TH ST  
 LOUISVILLE, KY 40202  
 Louisville Landmark Hotel, LLC

**REFLECTED CEILING PLAN LEVEL 1**

KAY LANG	20250030
Principal-in-Charge	Project No.
VLADEMIR MARTINEZ	05/01/2026
Project Manager	Date
Project Architect	
Staff Architect	

**ID 1.13**

PROJECT NUMBER: 20250030 PROJECT NAME: JW MARRIOTT LOUISVILLE  
 SHEET NUMBER: AX-XX - SHEET TITLE  
 Autodesk Docs/20250030 - JW Marriott Louisville/20250030\_v25\_Louisville-JW Marriott\_ARCH.rvt  
 3/13/2026 4:37:27 PM



©2020 COOPER CARRY

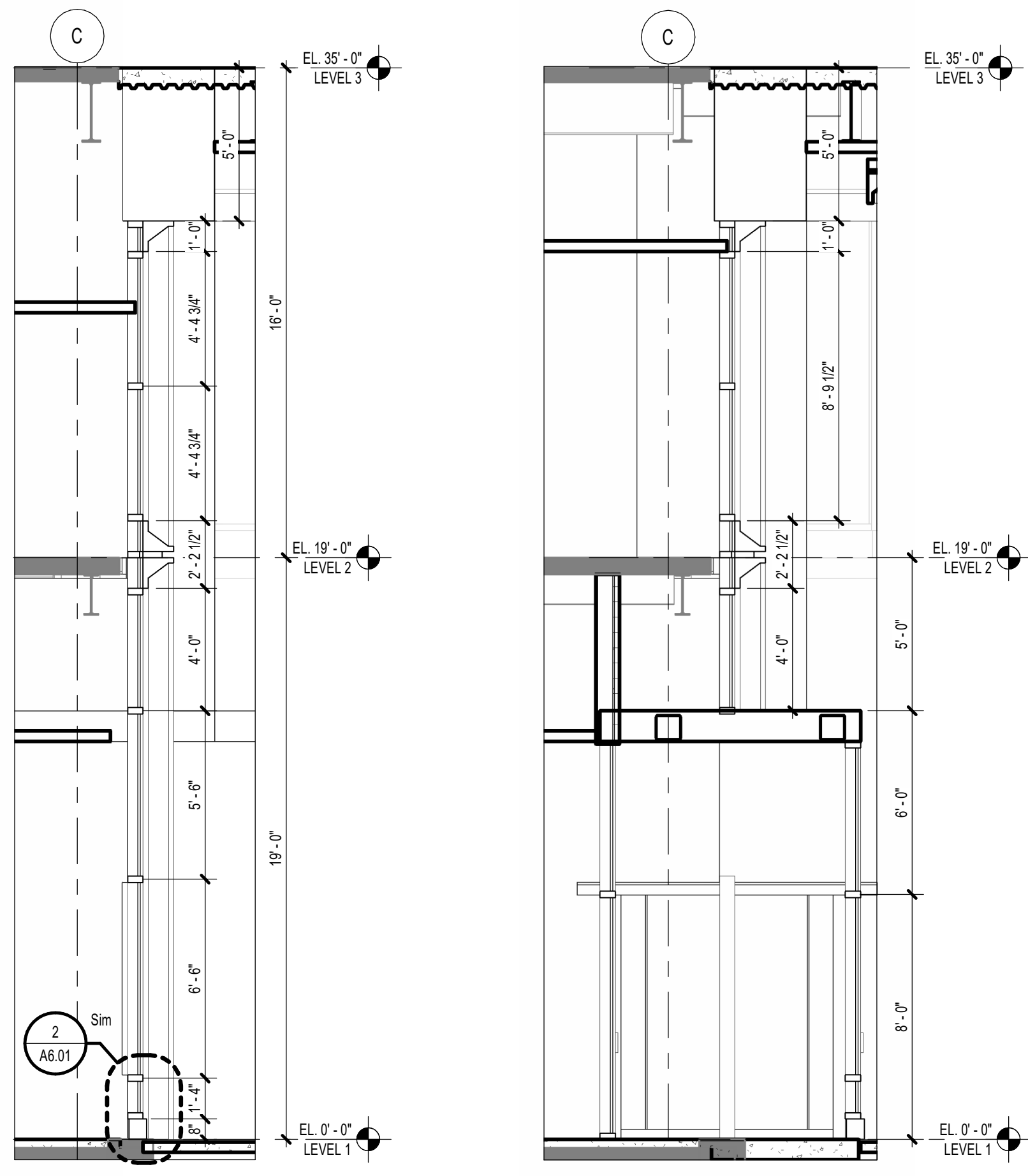
**SCOPE DOCUMENTS**

The Contract Documents issued for Design Development are intended to be at that level of development and as such, may be neither complete nor coordinated. The Contractor is responsible for complete and coordinated pricing and execution of the Work, and shall include items necessary for the proper execution and completion of the Work, as shown, specified, reasonably inferred or required for a complete Project. For Work of delegated designs, systems, assemblies, components and materials shall comply with national, state and local code requirements. The Contractor shall inform the Owner and Architect, in timely fashion, of any discovered omissions, inconsistencies or errors in the Contract Documents.

**ISSUANCES**

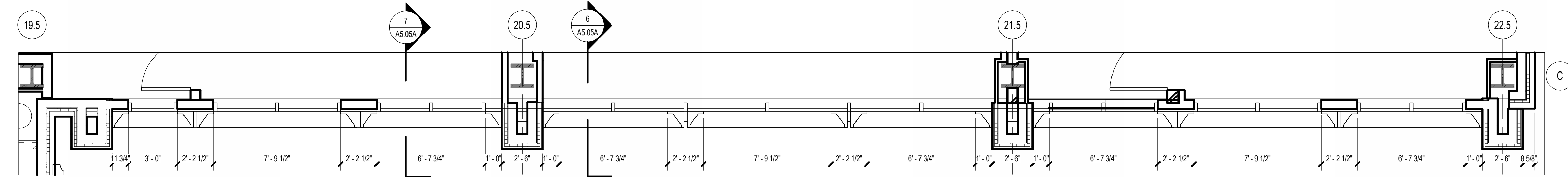
No.	Drawing Issue Description	Date
	DESIGN DEVELOPMENT	05/01/2026

REFER TO A4.01 FOR FINISH MATERIALS AND NOTES

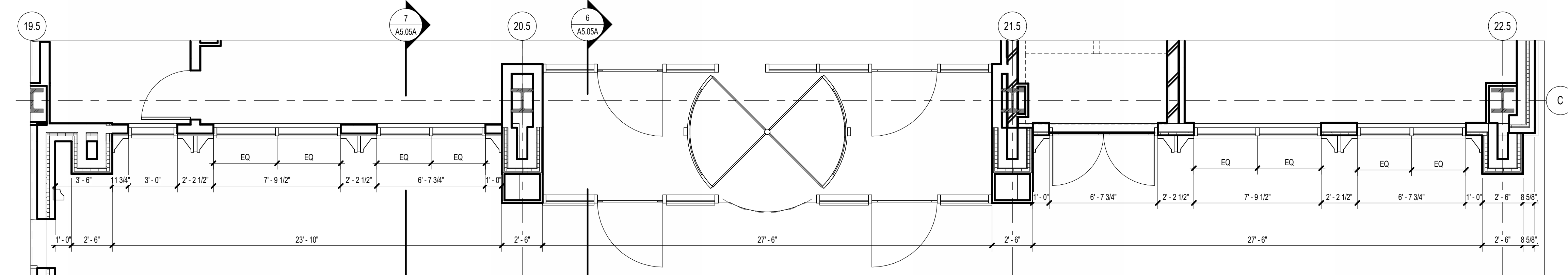


**7 WALL SECTION - EAST B - 2**  
 A5.05A | A5.05A | SCALE: 1/4" = 1'-0"

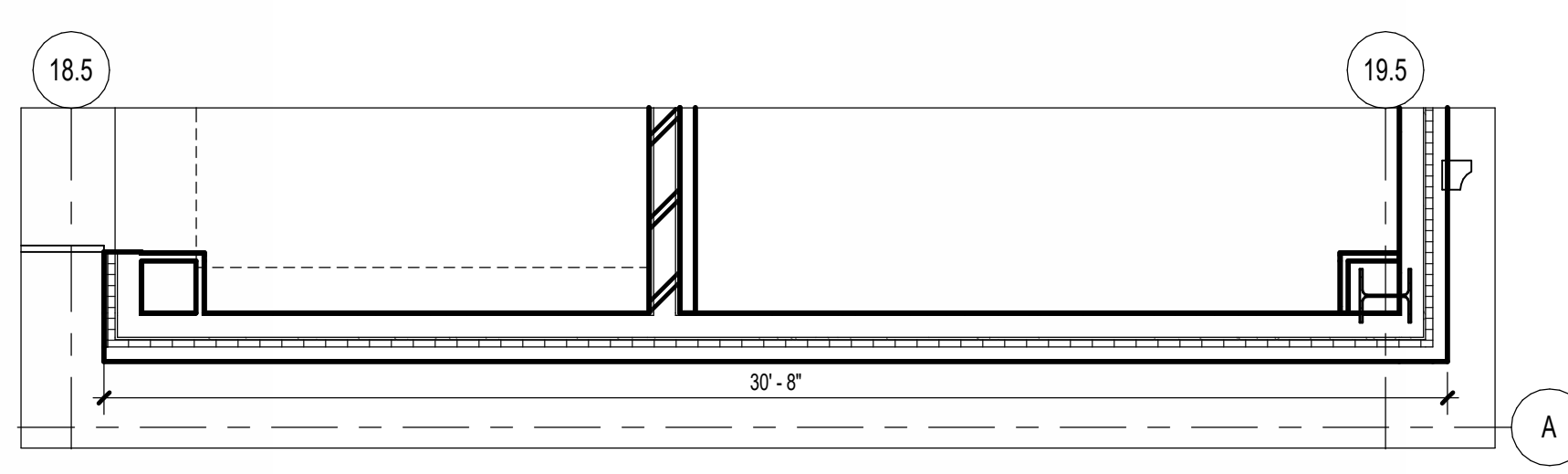
**6 WALL SECTION - EAST B - 1**  
 A5.05A | A5.05A | SCALE: 1/4" = 1'-0"



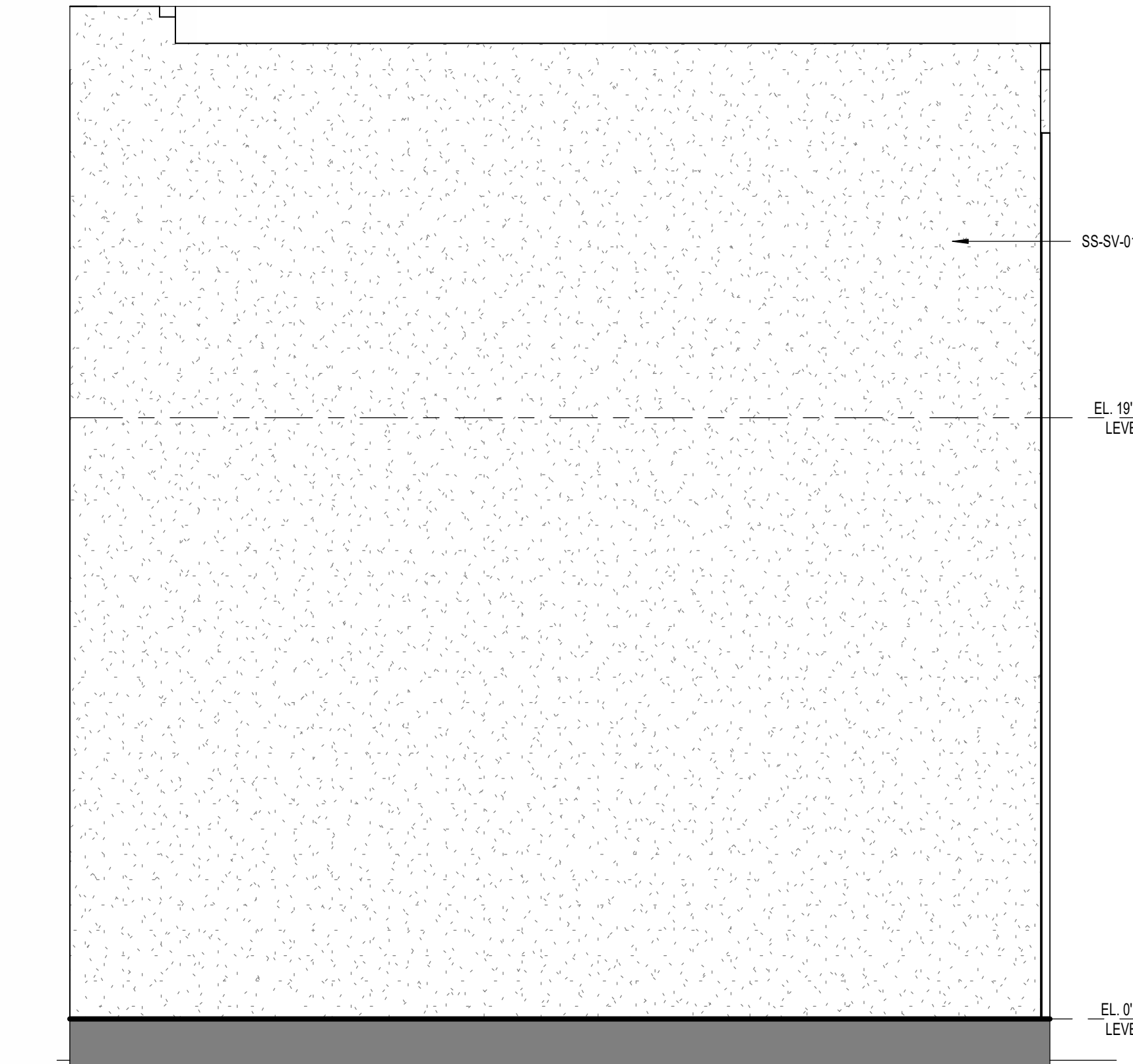
**5 ENLARGED FLOOR PLAN - EAST B - LEVEL 2**  
 A5.05A | SCALE: 1/4" = 1'-0"



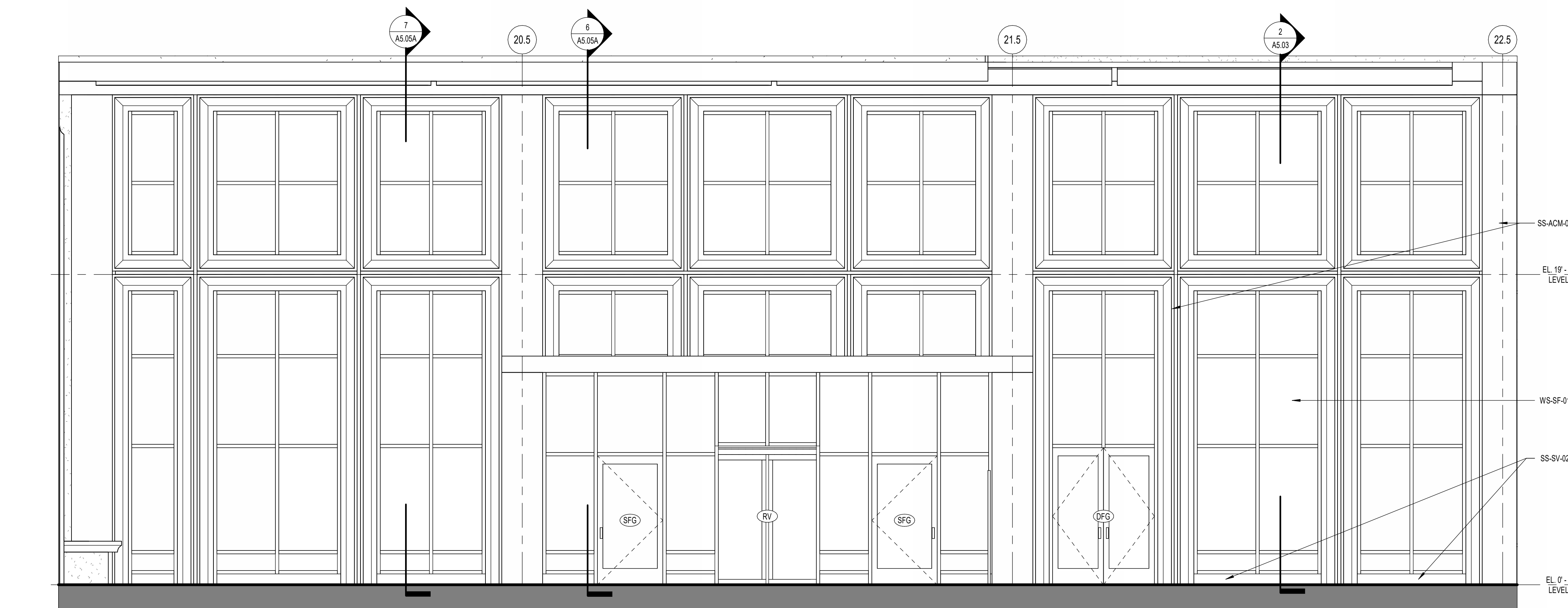
**3 ENLARGED FLOOR PLAN - EAST B - LEVEL 1**  
 A5.05A | SCALE: 1/4" = 1'-0"



**44 ENLARGED FLOOR PLAN - EAST C - LEVEL 1**  
 A5.05A | SCALE: 1/4" = 1'-0"



**2 ENLARGED ELEVATION - EAST (C)**  
 A4.03 | A5.05A | SCALE: 1/4" = 1'-0"



**1 ENLARGED ELEVATION - EAST (B)**  
 A4.03 | A5.05A | SCALE: 1/4" = 1'-0"

PROJECT NUMBER: 20250030 PROJECT NAME: JW MARRIOTT LOUISVILLE  
 SHEET NUMBER: A5.05A - ENLARGED PLANS, SECTIONS AND ELEVATIONS - EAST  
 Autodesk Docs/20250030 - JW Marriott Louisville/20250030\_v25\_Louisville-JW Marriott\_ARCH.rvt  
 5/1/2026 2:58:20 PM

**JW MARRIOTT LOUISVILLE**

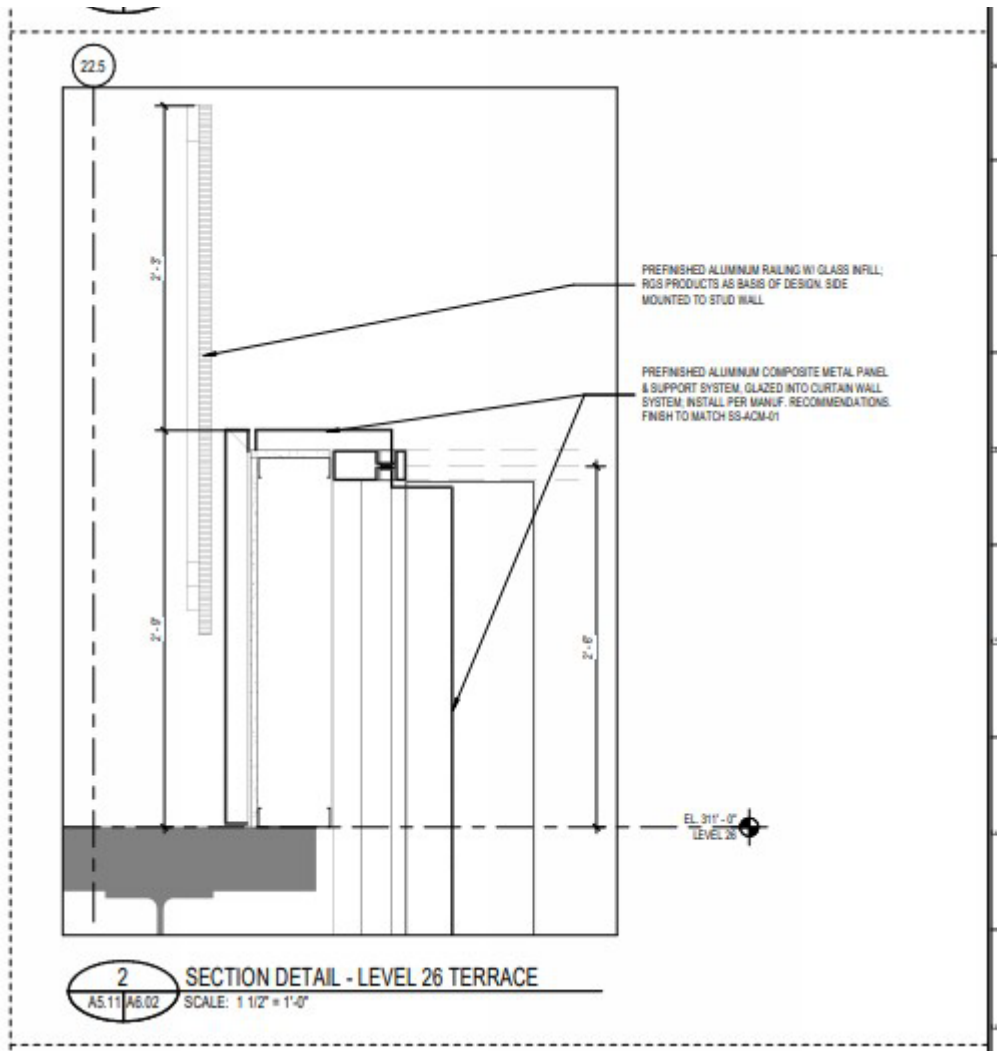
401 S 4TH ST  
 LOUISVILLE, KY 40202  
 Louisville Landmark Hotel, LLC

**ENLARGED PLANS, SECTIONS  
 AND ELEVATIONS - EAST**

MIKE LINKER Principal-in-Charge	20250030 Project No.
BRANDON LENK Project Manager	05/01/2026 Date
JASON ALBERS Project Architect	

**A5.05A**

NOT ISSUED FOR CONSTRUCTION



22.5

2'-9"

2'-8"

PREFINISHED ALUMINUM RAILING W/ GLASS INFILL,  
RIG PRODUCTS AS BASIS OF DESIGN, SIDE  
MOUNTED TO STUD WALL

PREFINISHED ALUMINUM COMPOSITE METAL PANEL  
& SUPPORT SYSTEM, GLAZED INTO CURTAIN WALL  
SYSTEM, INSTALL PER MANUF. RECOMMENDATIONS,  
FINISH TO MATCH SS-ACM-01

2'-6"

EL. 311'-0"  
LEVEL 26

**2 SECTION DETAIL - LEVEL 26 TERRACE**

AS.11 | A6.02 SCALE: 1 1/2" = 1'-0"