

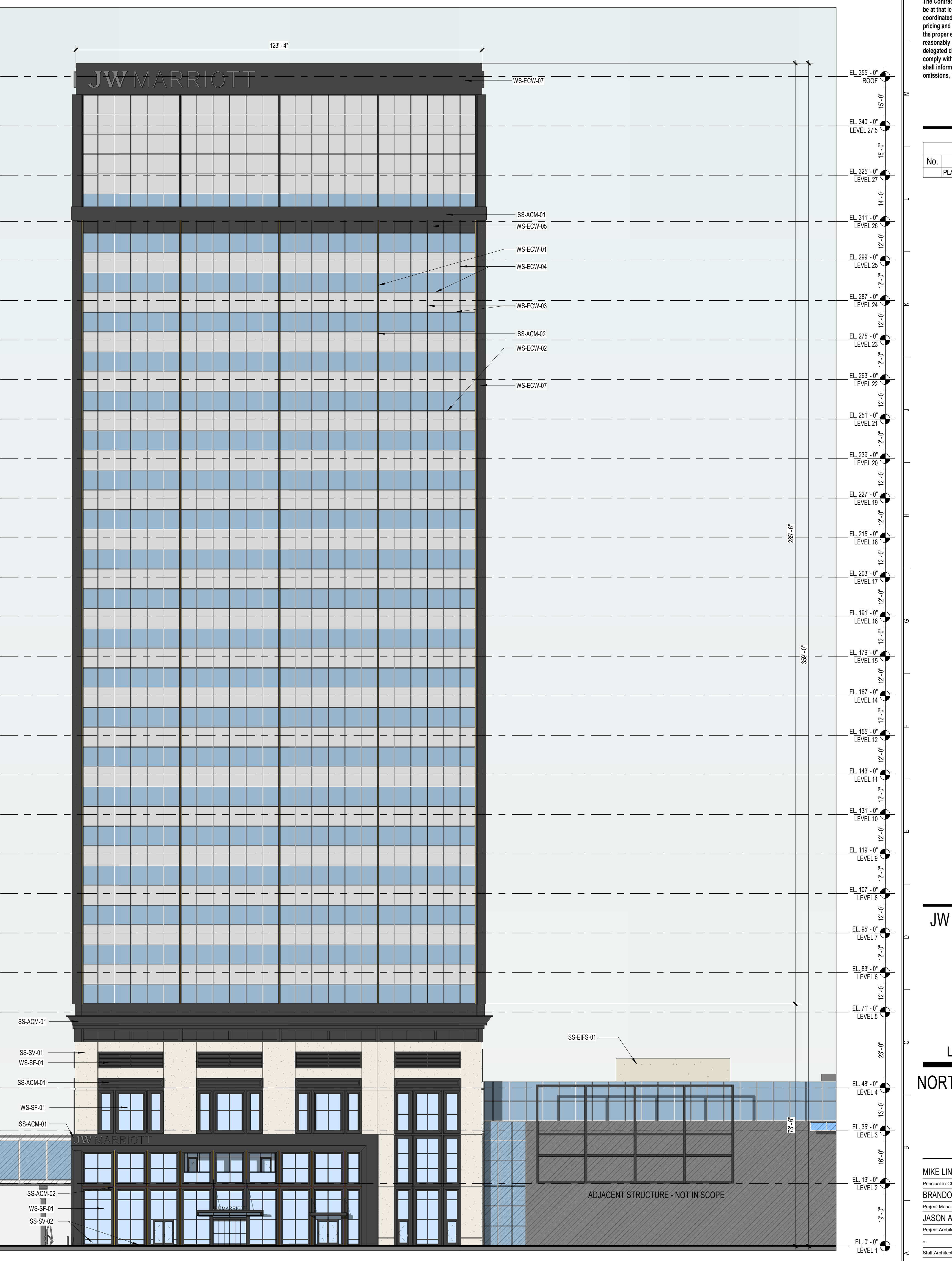
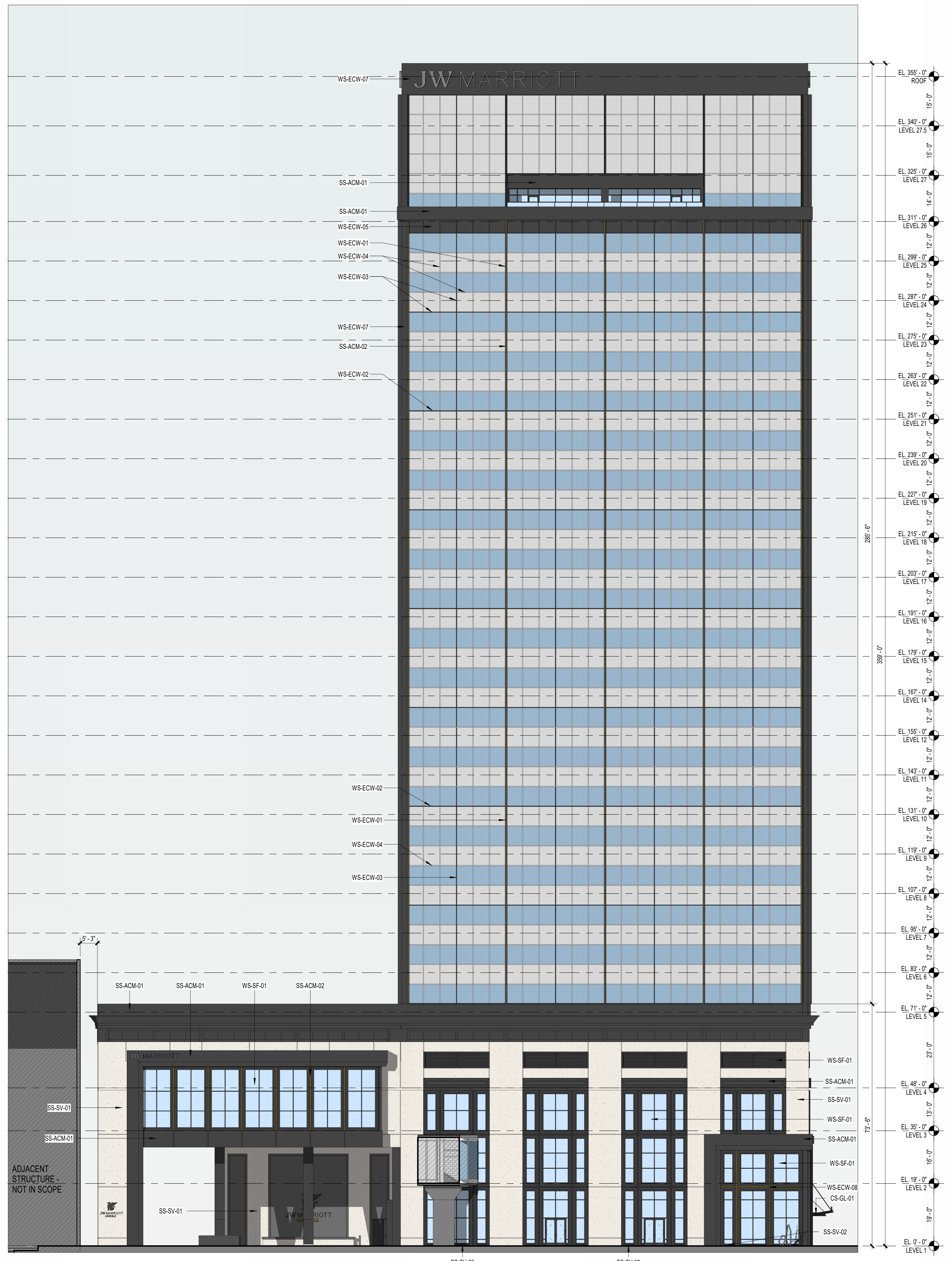


SCOPE DOCUMENTS

The Contract Documents issued for Design Development are intended to be at that level of development and as such, may be neither complete nor coordinated. The Contractor is responsible for complete and coordinated pricing and execution of the Work, and shall include items necessary for the proper execution and completion of the Work, as shown, specified, reasonably inferred or required for a complete Project. For Work of delegated designs, systems, assemblies, components and materials shall comply with national, state and local code requirements. The Contractor shall inform the Owner and Architect, in timely fashion, of any discovered omissions, inconsistencies or errors in the Contract Documents.

ISSUANCES		
No.	Drawing Issue Description	Date
	PLANNING SUBMISSION	04/27/2026

							
SS-SV-01 (ALTERNATE: PRECAST CONCRETE)	SS-SV-02	SS-EIFS-01	SS-ACM-01 WS-CW-01 WS-SF-01 WS-ECW-01	WS-ECW-02 WS-ECW-03 WS-ECW-05 WS-ECW-07	WS-ECW-04	SS-ACM-02	WS-SF-01 WS-ECW



PROJECT NUMBER: 20250030 PROJECT NAME: JW MARRIOTT LOUISVILLE  
 SHEET NUMBER: A4.41 - NORTH & WEST ELEVATIONS - MATERIAL PALETTE  
 Autodesk Docs://20250030 - JW Marriott Louisville/20250030\_v25\_Louisville-JW Marriott\_ARCH.rvt  
 4/24/2026 3:55:56 PM

JW MARRIOTT LOUISVILLE

401 S 4TH ST  
 LOUISVILLE, KY 40202  
 Louisville Landmark Hotel, LLC  
**NORTH & WEST ELEVATIONS - MATERIAL PALETTE**

MIKE LINKER Principal-in-Charge	20250030 Project No.
BRANDON LENK Project Manager	04/27/26 Date
JASON ALBERS Project Architect	
Staff Architect	

A4.41

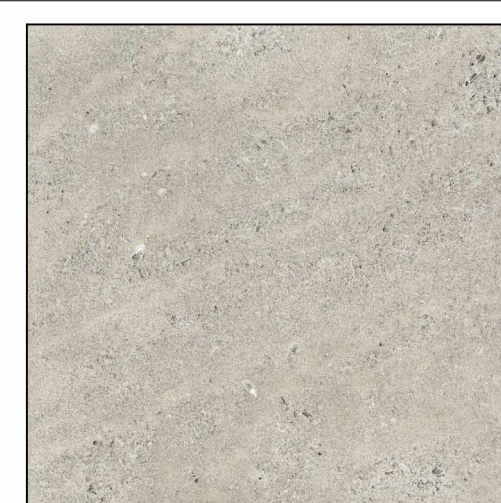


SCOPE DOCUMENTS

The Contract Documents issued for Design Development are intended to be at that level of development and as such, may be neither complete nor coordinated. The Contractor is responsible for complete and coordinated pricing and execution of the Work, and shall include items necessary for the proper execution and completion of the Work, as shown, specified, reasonably inferred or required for a complete Project. For Work of delegated designs, systems, assemblies, components and materials shall comply with national, state and local code requirements. The Contractor shall inform the Owner and Architect, in timely fashion, of any discovered omissions, inconsistencies or errors in the Contract Documents.

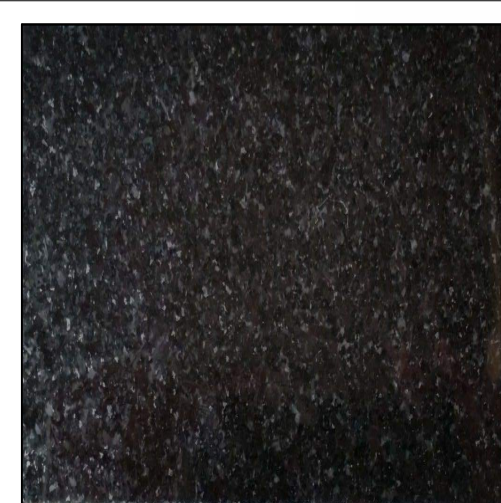
ISSUANCES

No.	Drawing Issue Description	Date
PLANNING SUBMISSION		04/27/2026



INDIANA LIMESTONE - "RUSTIC GRAY"

SS-SV-01  
(ALTERNATE, PRECAST CONCRETE)



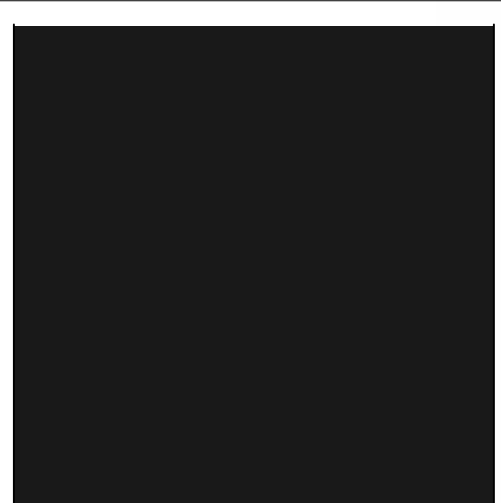
GRANITE - "ABSOLUTE BLACK GRANITE"

SS-SV-02



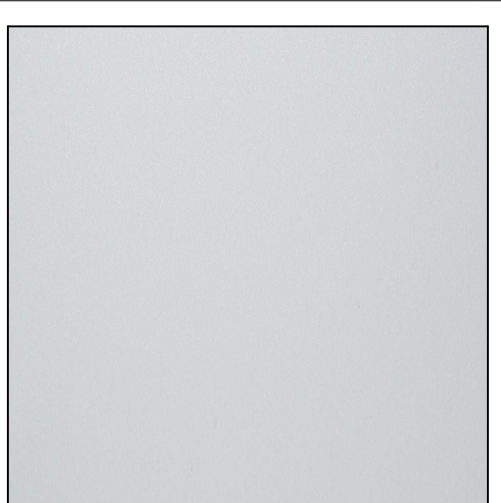
EIFS - OFF-WHITE

SS-EIFS-01



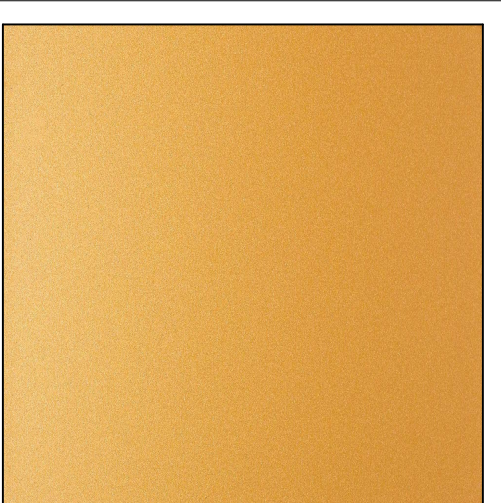
METAL - "TRI-CORN BLACK"

SS-ACM-01  
WS-CW-01  
WS-SF-01  
WS-ECW-01  
WS-ECW-02  
WS-ECW-03  
WS-ECW-04  
WS-ECW-05  
WS-ECW-06  
WS-ECW-07



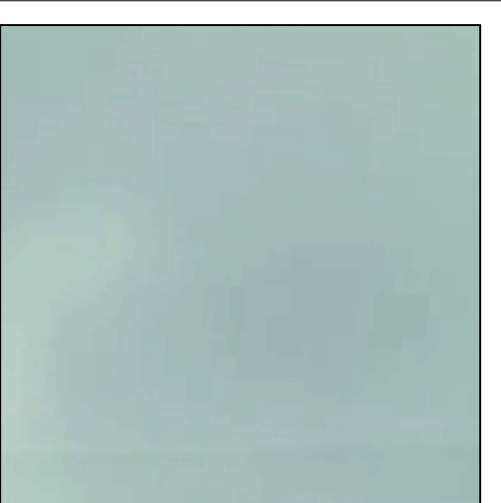
METAL - "MARKET PEARL WHITE MICA"

WS-ECW-04



METAL - "COLORADO GOLD METALLIC"

SS-ACM-02



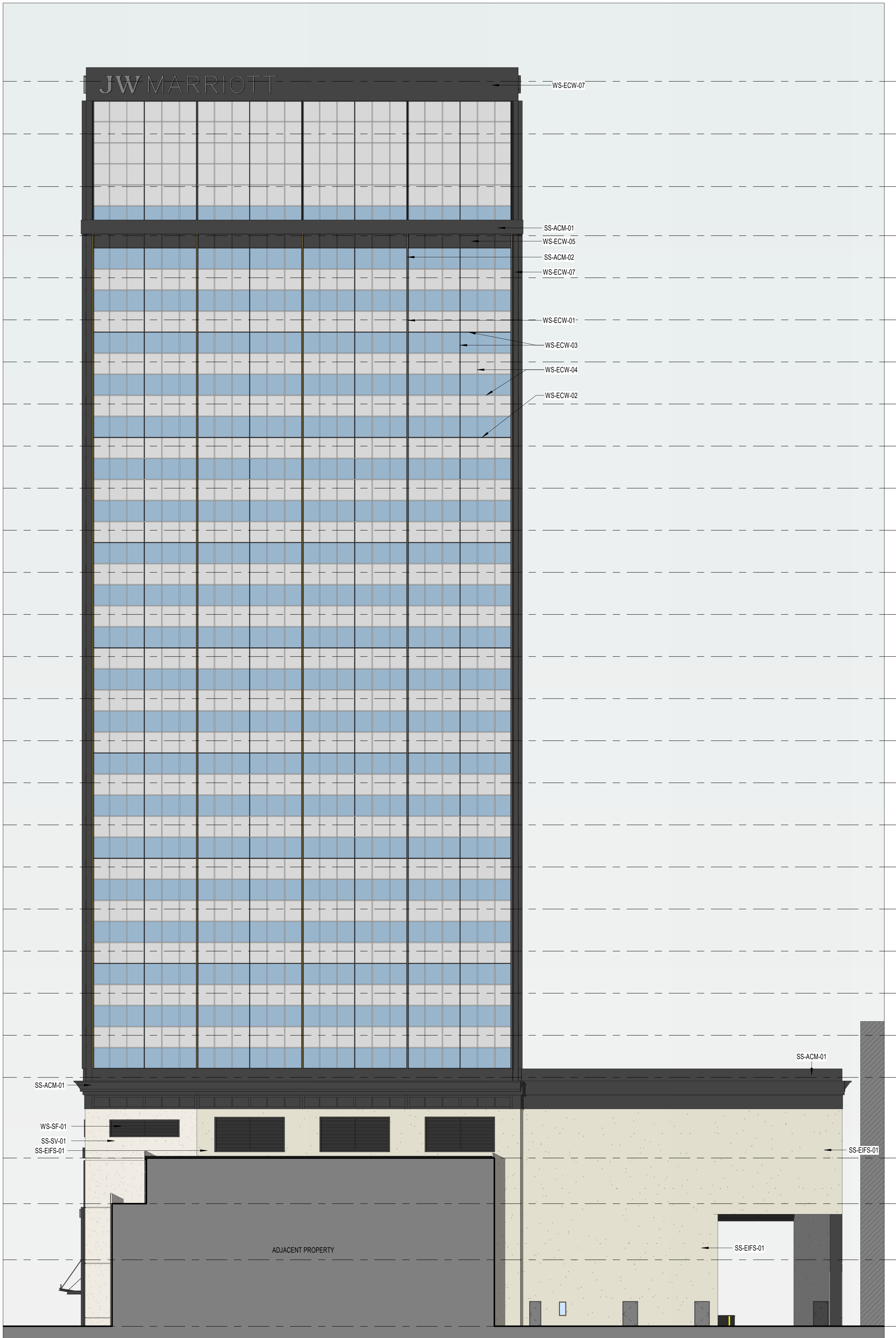
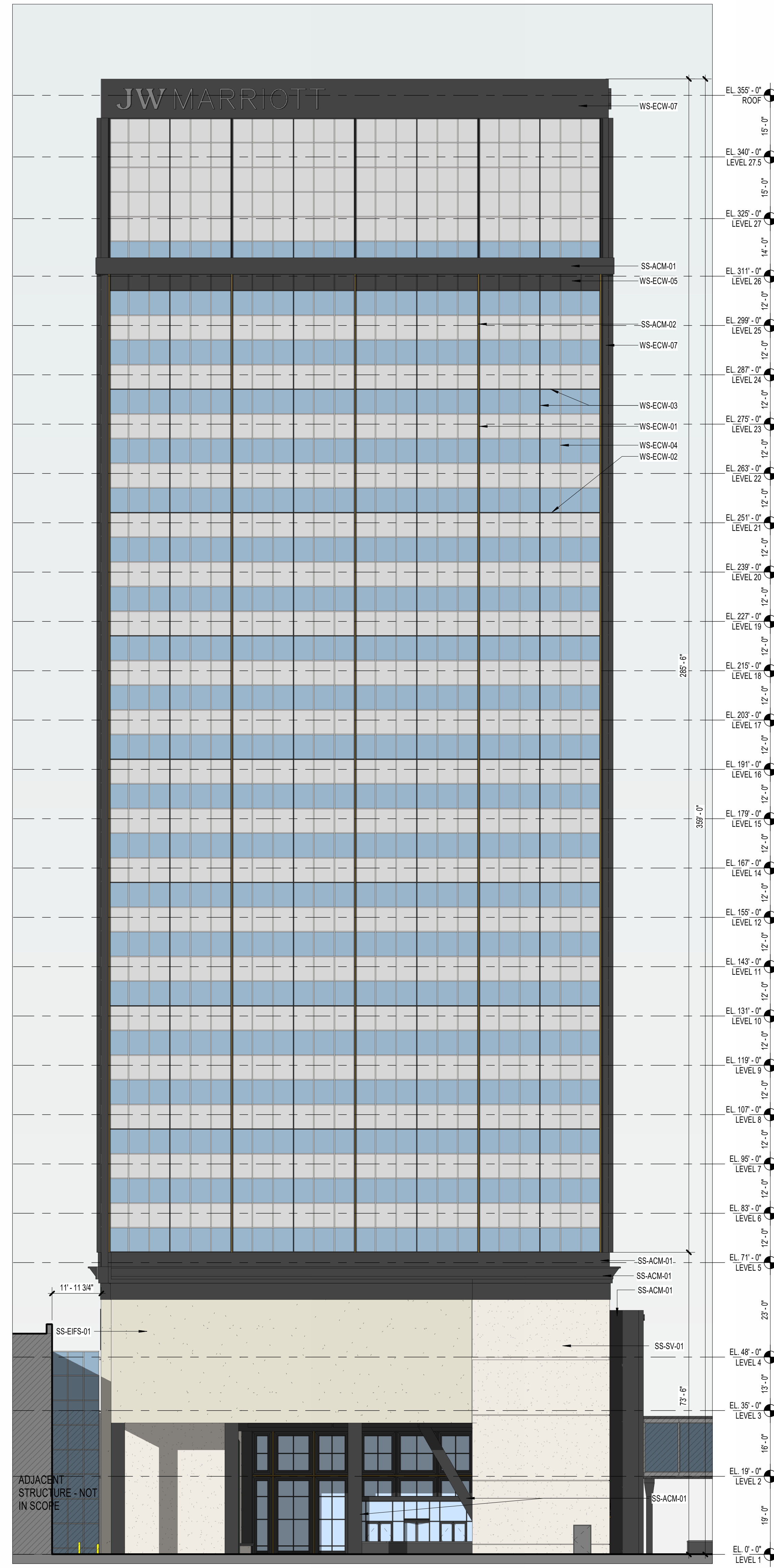
GLAZING - GUARDIAN SUNGUARD SxN 62/27

WS-SF-01



GLAZING - EXISTING CURTAIN WALL

WS-ECW



3 EAST ELEVATION - PORTE COCHERE - MATERIALS  
SCALE: 1/16" = 1'-0"

2 EAST ELEVATION - MATERIALS  
SCALE: 1/16" = 1'-0"

1 SOUTH ELEVATION - MATERIALS  
SCALE: 1/16" = 1'-0"

JW MARRIOTT LOUISVILLE

401 S 4TH ST  
LOUISVILLE, KY 40202  
Louisville Landmark Hotel, LLC

SOUTH & EAST ELEVATIONS - MATERIAL PALETTE

MIKE LINKER Principal-in-Charge	20250030 Project No.
BRANDON LENK Project Manager	04/27/26 Date
JASON ALBERS Project Architect	
Staff Architect	

A4.42

PROJECT NUMBER: 20250030 PROJECT NAME: JW MARRIOTT LOUISVILLE  
SHEET NUMBER: A4.42 - SOUTH & EAST ELEVATIONS - MATERIAL PALETTE  
Autodesk Docs/20250030 - JW Marriott Louisville/JW Marriott\_ARCH.rvt  
4/24/2026 3:56:34 PM



# COOPER CARRY

THE CENTER FOR CONNECTIVE ARCHITECTURE

625 North Washington Street  
Suite 200  
Alexandria, VA 22314  
(703) 519-6152  
coopercarry.com

©2020 COOPER CARRY

### SCOPE DOCUMENTS

The Contract Documents issued for Design Development are intended to be at that level of development and as such, may be neither complete nor coordinated. The Contractor is responsible for complete and coordinated pricing and execution of the Work, and shall include items necessary for the proper execution and completion of the Work, as shown, specified, reasonably inferred or required for a complete Project. For Work of delegated designs, systems, assemblies, components and materials shall comply with national, state and local code requirements. The Contractor shall inform the Owner and Architect, in timely fashion, of any discovered omissions, inconsistencies or errors in the Contract Documents.

### ISSUANCES

No.	Drawing Issue Description	Date
	PLANNING SUBMISSION	04/27/2026



## JW MARRIOTT LOUISVILLE

401 S 4TH ST  
LOUISVILLE, KY 40202

Louisville Landmark Hotel, LLC

### 3D RENDERING - NE AERIAL



# COOPER CARRY

MIKE LINKER	20250030
Principal-in-Charge	Project No.
BRANDON LENK	04/27/26
Project Manager	Date
JASON ALBERS	
Project Architect	
Staff Architect	

## A4.43

NOT ISSUED FOR CONSTRUCTION

PROJECT NUMBER: 20250030 PROJECT NAME: JW MARRIOTT LOUISVILLE  
SHEET NUMBER: A4.43 3D RENDERING - NE AERIAL  
Autodesk Docs/20250030 - JW Marriott Louisville/20250030\_V25\_Louisville-JW Marriott\_ARCH.rvt  
4/24/2026 3:56:35 PM



**COOPER CARRY**  
 THE CENTER FOR CONNECTIVE ARCHITECTURE  
 625 North Washington Street  
 Suite 200  
 Alexandria, VA 22314  
 (703) 519-6152  
 coopercarry.com

©2026 COOPER CARRY

**SCOPE DOCUMENTS**  
 The Contract Documents issued for Design Development are intended to be at that level of development and as such, may be neither complete nor coordinated. The Contractor is responsible for complete and coordinated pricing and execution of the Work, and shall include items necessary for the proper execution and completion of the Work, as shown, specified, reasonably inferred or required for a complete Project. For Work of delegated designs, systems, assemblies, components and materials shall comply with national, state and local code requirements. The Contractor shall inform the Owner and Architect, in timely fashion, of any discovered omissions, inconsistencies or errors in the Contract Documents.

ISSUANCES		
No.	Drawing Issue Description	Date
	PLANNING SUBMISSION	04/27/2026



PROJECT NUMBER: 20250030 PROJECT NAME: JW MARRIOTT LOUISVILLE  
 SHEET NUMBER: A4.44 - 3D RENDERING - NW AERIAL  
 Autodesk Docs://20250030 - JW Marriott Louisville/20250030\_V25\_Louisville-JW Marriott\_ARCH.rvt  
 4/24/2026 3:56:36 PM

JW MARRIOTT LOUISVILLE

401 S 4TH ST  
 LOUISVILLE, KY 40202  
 Louisville Landmark Hotel, LLC



**COOPER CARRY**

3D RENDERING - NW AERIAL

MIKE LINKER	20250030
Principal-in-Charge	Project No.
BRANDON LENK	04/27/26
Project Manager	Date
JASON ALBERS	
Project Architect	
Staff Architect	

**A4.44**

NOT ISSUED FOR CONSTRUCTION



**SCOPE DOCUMENTS**

The Contract Documents issued for Design Development are intended to be at that level of development and as such, may be neither complete nor coordinated. The Contractor is responsible for complete and coordinated pricing and execution of the Work, and shall include items necessary for the proper execution and completion of the Work, as shown, specified, reasonably inferred or required for a complete Project. For Work of delegated designs, systems, assemblies, components and materials shall comply with national, state and local code requirements. The Contractor shall inform the Owner and Architect, in timely fashion, of any discovered omissions, inconsistencies or errors in the Contract Documents.

**ISSUANCES**

No.	Drawing Issue Description	Date
	PLANNING SUBMISSION	04/27/2026



**JW MARRIOTT LOUISVILLE**

401 S 4TH ST  
 LOUISVILLE, KY 40202

Louisville Landmark Hotel, LLC



**COOPER CARRY**

**3D RENDERING - NW STREET VIEW**

Principal-in-Charge	MIKE LINKER	Project No.	20250030
Project Manager	BRANDON LENK	Date	04/27/26
Project Architect	JASON ALBERS		
Staff Architect			

**A4.45**



# COOPER CARRY

THE CENTER FOR CONNECTIVE ARCHITECTURE

625 North Washington Street  
Suite 200  
Alexandria, VA 22314  
(703) 519-6152  
coopercarry.com

©2025 COOPER CARRY

### SCOPE DOCUMENTS

The Contract Documents issued for Design Development are intended to be at that level of development and as such, may be neither complete nor coordinated. The Contractor is responsible for complete and coordinated pricing and execution of the Work, and shall include items necessary for the proper execution and completion of the Work, as shown, specified, reasonably inferred or required for a complete Project. For Work of delegated designs, systems, assemblies, components and materials shall comply with national, state and local code requirements. The Contractor shall inform the Owner and Architect, in timely fashion, of any discovered omissions, inconsistencies or errors in the Contract Documents.

### ISSUANCES

No.	Drawing Issue Description	Date
	PLANNING SUBMISSION	04/27/2025



PROJECT NUMBER: 20250030 PROJECT NAME: JW MARRIOTT LOUISVILLE  
SHEET NUMBER: A4.46 - 3D RENDERING - ENTRY  
Autodesk Docs/20250030 - JW Marriott Louisville/20250030\_v25\_Louisville-JW Marriott\_ARCH.rvt  
4/24/2026 3:56:39 PM

## JW MARRIOTT LOUISVILLE

401 S 4TH ST  
LOUISVILLE, KY 40202

Louisville Landmark Hotel, LLC

### 3D RENDERING - ENTRY



MIKE LINKER	20250030
Principal-in-Charge	Project No.
BRANDON LENK	04/27/26
Project Manager	Date
JASON ALBERS	
Project Architect	
Staff Architect	
	<b>A4.46</b>

NOT ISSUED FOR CONSTRUCTION



©2026 COOPER CARRY

**SCOPE DOCUMENTS**

The Contract Documents issued for Design Development are intended to be at that level of development and as such, may be neither complete nor coordinated. The Contractor is responsible for complete and coordinated pricing and execution of the Work, and shall include items necessary for the proper execution and completion of the Work, as shown, specified, reasonably inferred or required for a complete Project. For Work of delegated designs, systems, assemblies, components and materials shall comply with national, state and local code requirements. The Contractor shall inform the Owner and Architect, in timely fashion, of any discovered omissions, inconsistencies or errors in the Contract Documents.

**ISSUANCES**

No.	Drawing Issue Description	Date
	PLANNING SUBMISSION	04/27/2026



**JW MARRIOTT LOUISVILLE**

401 S 4TH ST  
 LOUISVILLE, KY 40202

Louisville Landmark Hotel, LLC

**3D RENDERING - PORTE  
 COCHERE**



**COOPER CARRY**

MIKE LINKER Principal-in-Charge	20250030 Project No.
BRANDON LENK Project Manager	04/27/26 Date
JASON ALBERS Project Architect	
Staff Architect	<b>A4.47</b>

PROJECT NUMBER: 20250030 PROJECT NAME: JW MARRIOTT LOUISVILLE  
 SHEET NUMBER: A4.47 - 3D RENDERING - PORTE COCHERE  
 Autodesk Docs://20250030 - JW Marriott Louisville/20250030\_v25\_Louisville-JW Marriott\_ARCH.rvt  
 4/24/2026 3:56:40 PM