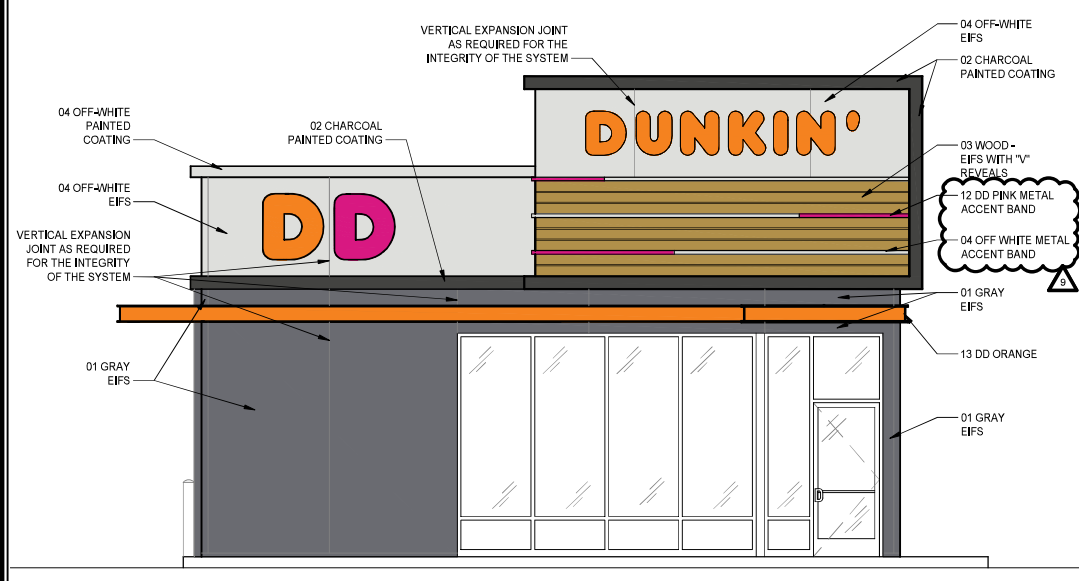
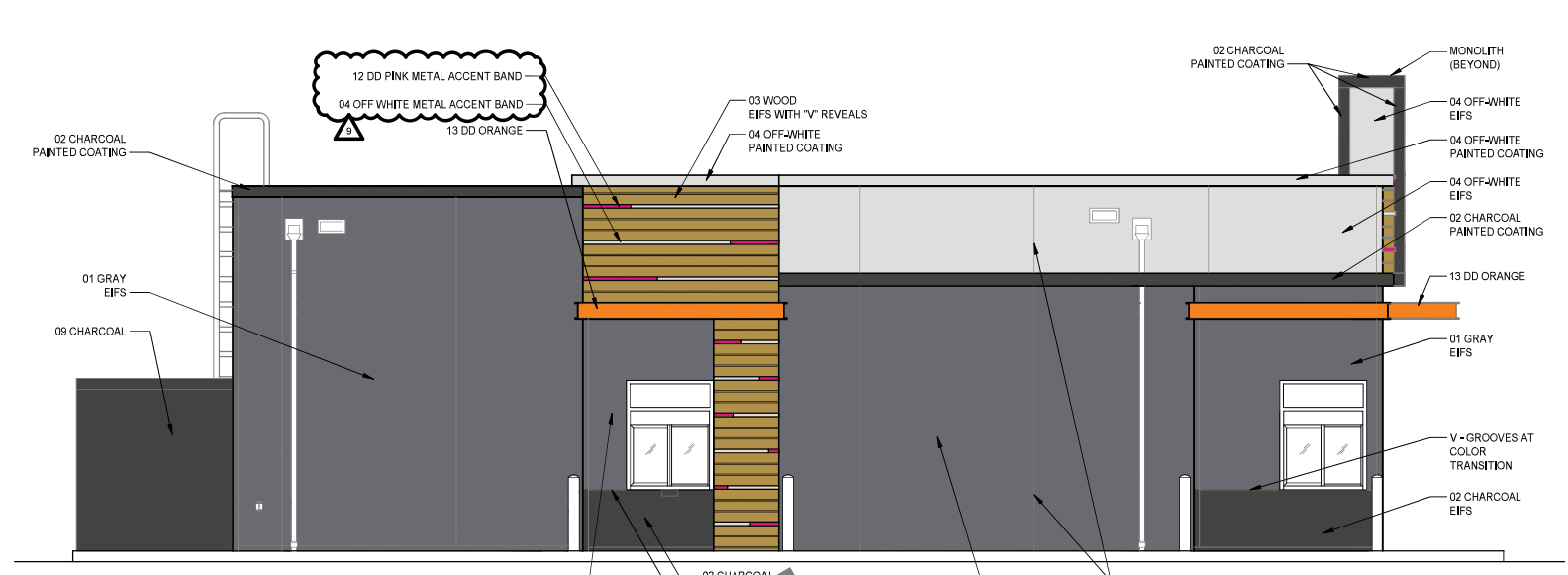


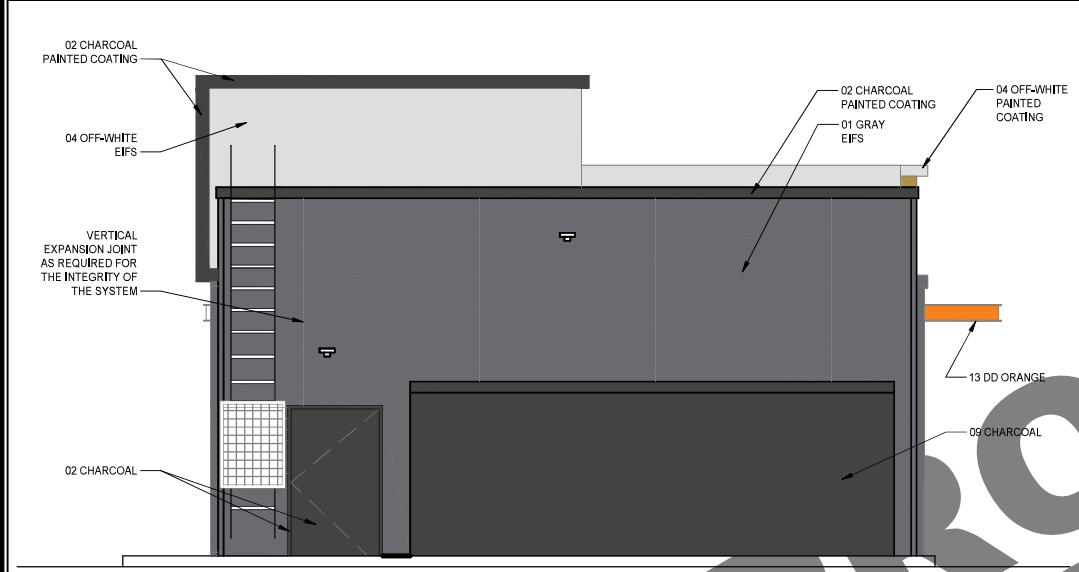
PROTOTYPE
NOT FOR CONSTRUCTION



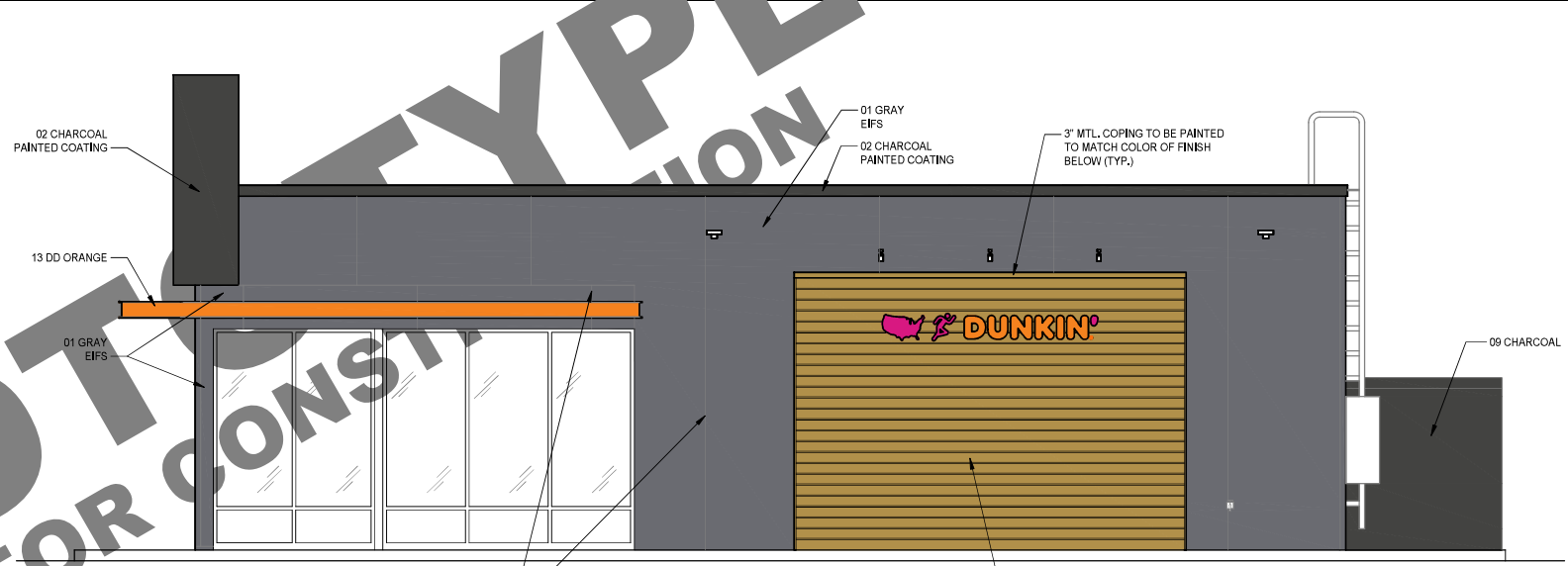
1 FRONT ELEVATION
1/4" = 1'-0"
NOTE:



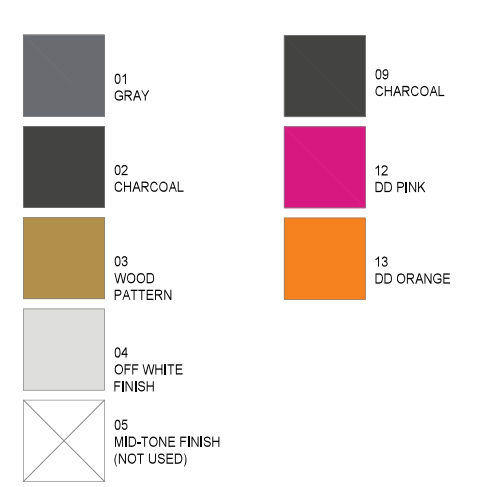
2 DRIVE THRU ELEVATION
1/4" = 1'-0"
NOTE:



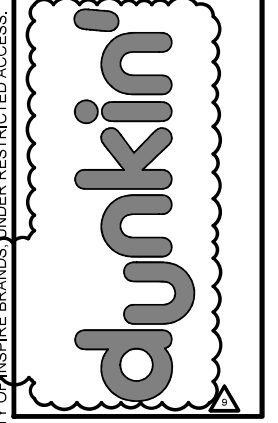
3 REAR ELEVATION
1/4" = 1'-0"
NOTE:



4 SIDE ELEVATION
1/4" = 1'-0"
NOTE:



EXTERIOR MATRIX OF MATERIALS (VMOM) OPTIONS			
CODE	MATERIAL	OPTION # 2	OPTIONAL UPGRADE
-01	GRAY PATTERN	DRYVIT EIFS	
-02	CHARCOAL PATTERN	DRYVIT EIFS	BRICK EIFS, DRYVIT MODULAR WITH TEXTURE AND WIRE CUT, IRON SPOT AND FLASHED
-03	WOOD PATTERN	WOODTONE	
-04	OFF-WHITE PATTERN	DRYVIT EIFS / PAINT SHERWIN WILLIAMS	
-09	WALK-IN BOX	PAINT SHERWIN WILLIAMS	
-12	PINK BAND	PAINT SHERWIN WILLIAMS	
-13	ORANGE BAND	DRYVIT EIFS	
TR -01	PINK EXTRUDED METAL CHANNEL AT TOWER ELEMENT	TAMLYN	
TR -02	OFF WHITE EXTRUDED METAL CHANNEL AT TOWER ELEMENT	TAMLYN	



ARCHITECT'S TITLE
BLOCK & SEAL

NO.	DESCRIPTION	DATE	SCALE	DRAWN	CHKD	APPD
1	GENERAL UPDATES	03-29-19				
2	GENERAL UPDATES	07-03-19				
3	GENERAL UPDATES	01-31-20				
4	GENERAL UPDATES	04-14-20				
5	FINISH UPDATES	03-19-21				
6	FINISH UPDATES & MISC.	07-16-21				
7	FINISH UPDATES	08-20-21				
8	EYE WASH STATION	01-27-22				
9	GENERAL UPDATES	09-01-22				

DD NEXT GEN
DUNKIN DESIGN GUIDELINES
EXTERIOR DESIGN GUIDELINE
EIFS MATRIX OF MATERIALS
PC NUMBER

A-5c

NOTE: DRAWINGS ARE NOT TO SCALE IF SHEET IS PLOTTED ON 11" x 17"

PROTOTYPE
NOT FOR CONSTRUCTION

PROTOTYPE
NOT FOR CONSTRUCTION

PROTOTYPE
NOT FOR CONSTRUCTION

THESE PLANS ARE CONFIDENTIAL PROPERTY OF INSPIRE BRANDS, UNDER RESTRICTED ACCESS.