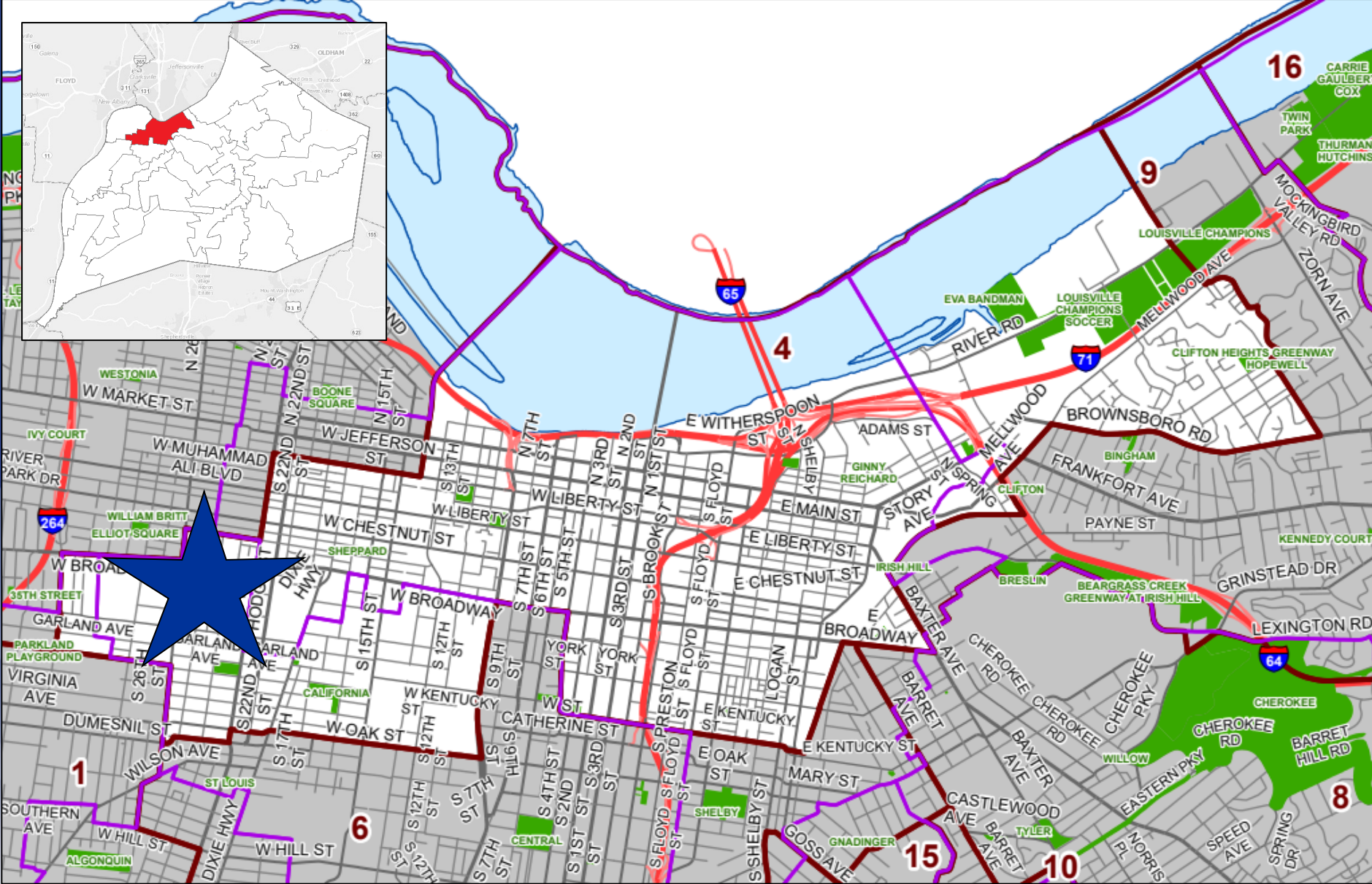
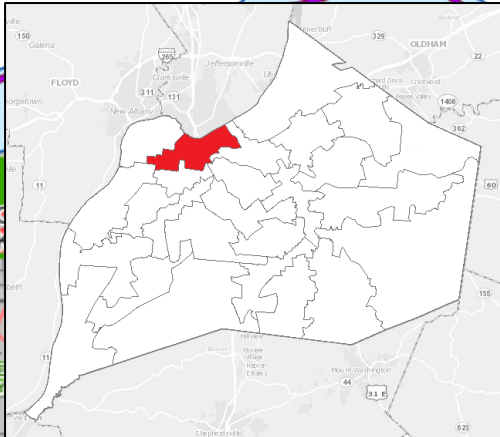


# 22-STRCLOSURE-0026

## MSD MAPLE STREET PARK CLOSURE



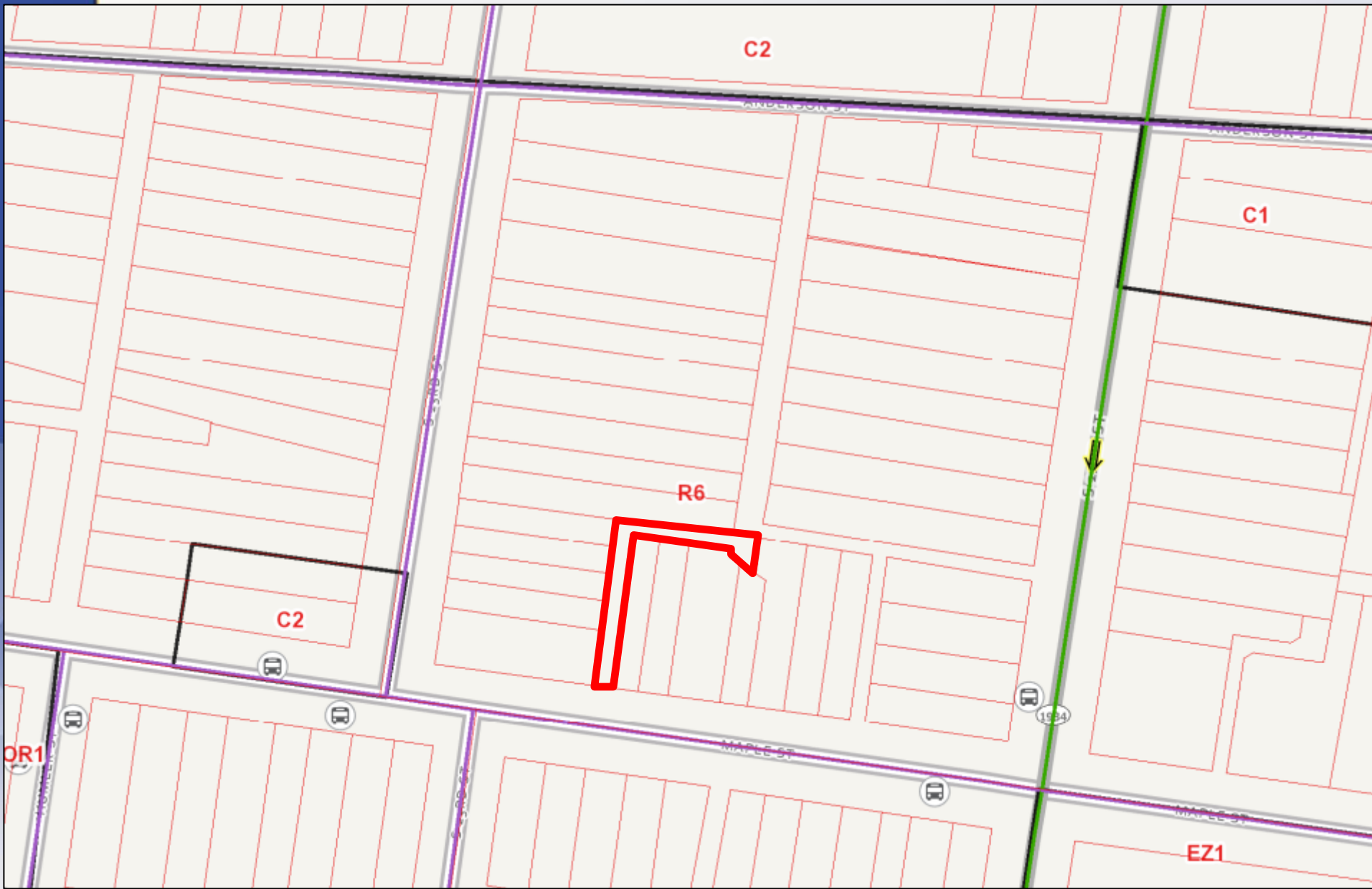
Planning & Zoning Committee  
February 21, 2023



The logo for Louisville Metro, featuring a stylized sun or flower icon above the word "Louisville" in a serif font, with "METRO" in a smaller sans-serif font above it.

**Unnamed Alley**  
**District 4 - Jecorey Arthur**

**22-STRCLOSURE-0026**



# Requests

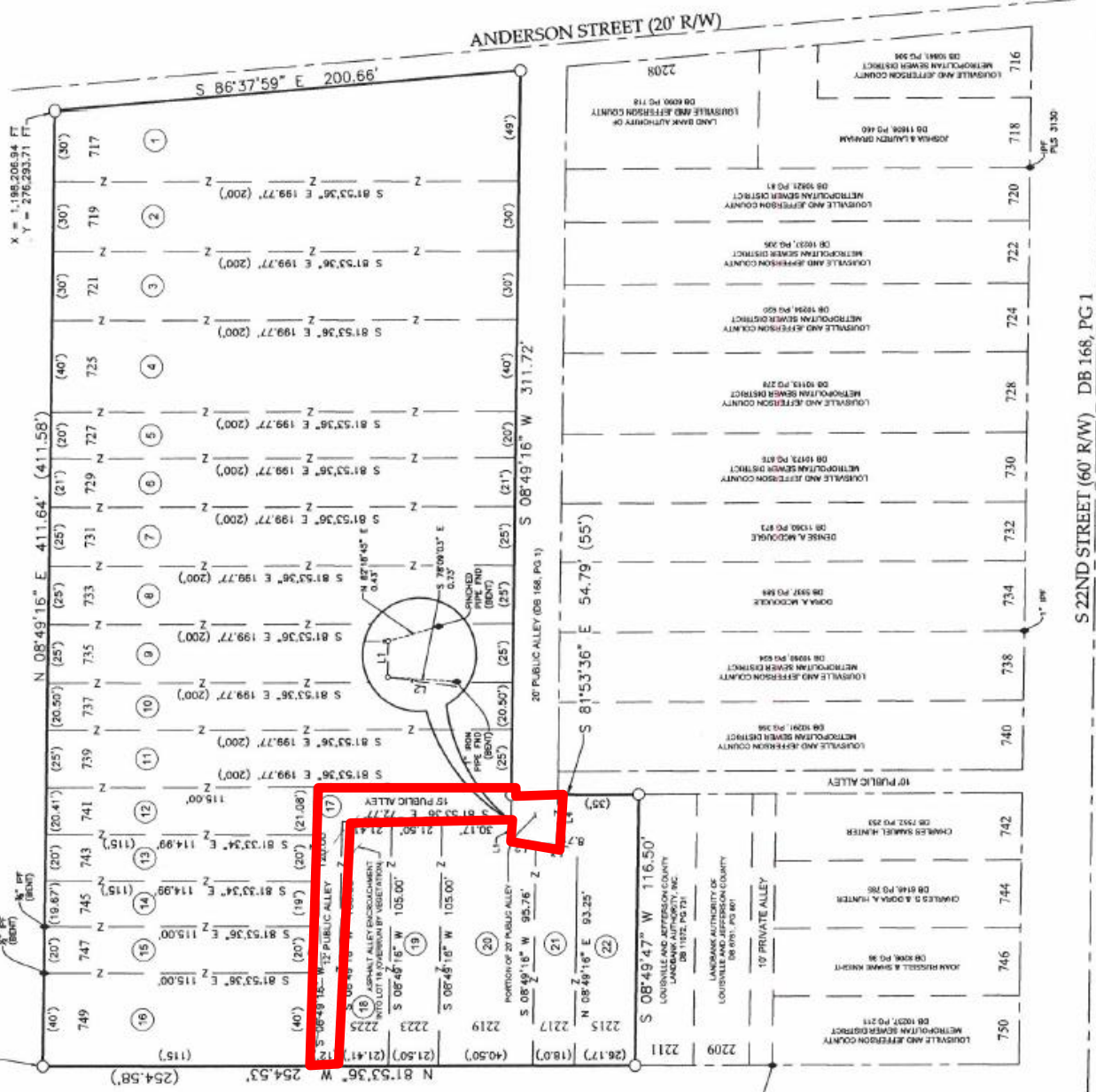
- **Closure of Public Right of Way for unnamed, unimproved alley (22-STRCLOSURE-0026)**

# Case Summary

- Closure of unimproved alley to the rear of property
- Associated with Louisville MSD property acquisitions related to local stormwater flooding
- Property will be used for development of Maple Street park project

POINT OF BEGINNING  
 $X = 1,198,143.82$  FT  
 $Y = 275,886.34$  FT

S 23RD STREET (60' R/W) DB 168, PG 1



$X = 1,198,208.94$  FT  
 $Y = 276,233.71$  FT

MAPLE STREET (60' R/W) DB 384, PG 638

10" BRONZE PIPE (BOND)

S 22ND STREET (60' R/W) DB 168, PG 1

# Public Meetings

- LD&T meeting on 1/12/2023
- Planning Commission public hearing on 1/19/2023
  - No one spoke in opposition.
  - Motion to recommend approval of the alley closure by a vote of 7-0-1.